

**Lakeview Cemetery - burial date, veterans, grave location, tombstone found, and cause of death - sorted by DOD**

<b>Last Name</b>	<b>First</b>	<b>DOD</b>	<b>Burial Date</b>	<b>Veteran</b>	<b>Grave Location</b>	<b>Tombstone Found</b>	<b>Cause of Death</b>
<b>Behrens</b>	<b>Gertie</b>	<b>9 Mar 1901</b>			<b>G-2-10</b>	<b>1</b>	
<b>Behrens</b>	<b>Baby Boy</b>	<b>22 Feb 1904</b>			<b>G-2-10</b>		<b>Stillborn</b>
<b>Kajander</b>	<b>Anna</b>	<b>15 Jan 1905</b>			<b>G-5-0</b>	<b>1</b>	
<b>Johnson</b>	<b>Kathrina</b>	<b>4 Mar 1907</b>			<b>G-6-3</b>	<b>1</b>	<b>Invalid</b>
<b>Schmidt</b>	<b>John</b>	<b>23 Feb 1910</b>	<b>25 Feb 1910</b>				<b>Inflammation of external auditory canal</b>
<b>Norton</b>	<b>Josephine</b>	<b>23 Oct 1911</b>	<b>28 Oct 1911</b>		<b>G-2-28</b>	<b>1</b>	<b>No doctor</b>
<b>Groth</b>	<b>Ferdinand</b>	<b>23 May 1912</b>	<b>27 May 1912</b>		<b>G-3-17</b>	<b>1</b>	<b>Cerebral hemorrhage</b>
<b>Norton</b>	<b>John</b>	<b>14 Dec 1912</b>	<b>18 Dec 1913</b>		<b>G-2-29</b>	<b>1</b>	<b>Cirrhosis of the liver</b>
<b>Morrison</b>	<b>Peter</b>	<b>23 Sep 1914</b>	<b>25 Sep 1914</b>				<b>Unreadable on DC</b>
<b>Ostlund</b>	<b>Lars</b>	<b>21 Dec 1914</b>					<b>Struck head while entering cabin - apparently froze to death</b>
<b>Deremo</b>	<b>Josephine</b>	<b>14 Jul 1915</b>	<b>16 Jul 1915</b>				<b>Inflammation of bowels</b>
<b>Olson</b>	<b>Ben</b>	<b>8 Jan 1916</b>	<b>11 Jan 1916</b>				<b>Marasmus (malnutrition)</b>
<b>Groth</b>	<b>Frederick</b>	<b>12 Aug 1916</b>	<b>15 Aug 1916</b>		<b>G-3-18</b>	<b>1</b>	<b>Accidental drowning - heart failure</b>

**Lakeview Cemetery - burial date, veterans, grave location, tombstone found, and cause of death - sorted by DOD**

<b>Last Name</b>	<b>First</b>	<b>DOD</b>	<b>Burial Date</b>	<b>Veteran</b>	<b>Grave Location</b>	<b>Tombstone Found</b>	<b>Cause of Death</b>
<b>Waller</b>	<b>Ida</b>	<b>19 Apr 1917</b>	<b>20 Apr 1917</b>				<b>Unreadable</b>
<b>Johnson</b>	<b>Baby Boy</b>	<b>7 Oct 1917</b>	<b>12 Oct 1917</b>		<b>G-6-2</b>	<b>1</b>	<b>Stillborn</b>
<b>Otten</b>	<b>Lucille</b>	<b>25 Sep 1917</b>	<b>26 Sep 1917</b>				<b>Weak heart</b>
<b>Otten</b>	<b>Frances</b>	<b>11 Nov 1917</b>	<b>13 Nov 1917</b>				<b>Acute gastro infection</b>
<b>Fenton</b>	<b>Lyman</b>	<b>10 Dec 1917</b>			<b>F-7-4</b>	<b>1</b>	<b>Chronic endocarditis</b>
<b>Chambers</b>	<b>Charles</b>	<b>11 Dec 1917</b>		<b>1</b>	<b>F-6-15</b>	<b>1</b>	
<b>Stenson</b>	<b>Leroy</b>	<b>4 Feb 1918</b>	<b>7 Feb 1918</b>		<b>G-3-10</b>	<b>1</b>	<b>Capillary bronchitis</b>
<b>Johnson</b>	<b>Nels</b>	<b>1918</b>			<b>G-6-5</b>	<b>1</b>	
<b>Lowe</b>	<b>Walter</b>	<b>24 Nov 1918</b>	<b>24 Nov 1918</b>		<b>G-3-9</b>		<b>Pneumonia following influenza</b>
<b>Lowe</b>	<b>Olga</b>	<b>24 Nov 1918</b>	<b>24 Nov 1918</b>		<b>G-3-8</b>		<b>Pneumonia followed by influenza</b>
<b>Lowe</b>	<b>Florence</b>	<b>25 Nov 1918</b>	<b>25 Nov 1918</b>		<b>G-3-7</b>		<b>Pneumonia following influenza</b>
<b>Reed</b>	<b>Arthur</b>	<b>1 May 1919</b>	<b>3 May 1919</b>				<b>Pneumonia</b>
<b>Gowdy</b>	<b>Clara</b>	<b>14 Jun 1919</b>	<b>17 Jun 1919</b>		<b>F-7-2</b>	<b>1</b>	<b>Cerebral hemorrhage</b>

**Lakeview Cemetery - burial date, veterans, grave location, tombstone found, and cause of death - sorted by DOD**

<b>Last Name</b>	<b>First</b>	<b>DOD</b>	<b>Burial Date</b>	<b>Veteran</b>	<b>Grave Location</b>	<b>Tombstone Found</b>	<b>Cause of Death</b>
Larson	Kate	6 Nov 1919	10 Nov 1919		F-1-14		Cancer of uterus
Sears	Raymond	17 Mar 1920	20 Mar 1920		G-1-3	1	Anemia, due to hemorrhage from ruptured umbilical cord during birth.
Ciskie	Lillian	10 May 1920	11 May 1920				Pneumonia
Otten	Beecke	14 Aug 1920	17 Aug 1920		F-7-8	1	Chronic interstitial nephritis
Anderson	Anna	29 Sep 1920	2 Oct 1920		G-3-16	1	Chronic gastroenteritis of unknown origin.
Groth	Wesley	16 Apr 1922	18 Apr 1922		F-6-8	1	Premature baby
Versto	Sverming	2 Apr 1923	6 Apr 1923		G-1-5	1	Bronchial asthma
Goranson	Albert	12 May 1923	15 May 1923		G-2-19	1	Acute diarrhea and vomiting
Gilbertson	Cena	3 Dec 1923	5 Dec 1923		F-5-23	1	Labor pneumonia
Groth	Sophia	22 Nov 1924	26 Nov 1924		F-6-5	1	Tuberculosis
Gowdy	Mary Ann	23 Jan 1925			F-7-1	1	Cerebral hemorrhage
Fraley	Lura	4 Feb 1925	7 Feb 1925				Unreadable on DC
Schliep	Louise	23 Mar 1925			F-4-32	1	Cancer of uterus

**Lakeview Cemetery - burial date, veterans, grave location, tombstone found, and cause of death - sorted by DOD**

<b>Last Name</b>	<b>First</b>	<b>DOD</b>	<b>Burial Date</b>	<b>Veteran</b>	<b>Grave Location</b>	<b>Tombstone Found</b>	<b>Cause of Death</b>
<b>Spicer</b>	<b>David</b>	<b>15 Apr 1925</b>	<b>18 Apr 1925</b>		<b>F-5-10</b>	<b>1</b>	<b>Pneumonia</b>
<b>Versto</b>	<b>Victor</b>	<b>18 Dec 1925</b>			<b>G-1-6</b>	<b>1</b>	<b>Tuberculosis</b>
<b>Reutter</b>	<b>Venita</b>	<b>6 Jul 1926</b>	<b>8 Jul 1926</b>		<b>G-1-2</b>	<b>1</b>	<b>Accidental drowning</b>
<b>Beseman</b>	<b>Ernest</b>	<b>5 Jan 1927</b>	<b>8 Jan 1927</b>		<b>F-4-10</b>		<b>Myocarditis</b>
<b>Otten</b>	<b>John</b>	<b>23 Feb 1927</b>	<b>25 Feb 1927</b>		<b>F-7-6</b>		<b>Brain fever</b>
<b>Pracht</b>	<b>Matthilda</b>	<b>16 May 1927</b>	<b>19 May 1927</b>		<b>F-1-9</b>	<b>1</b>	<b>Cardiac failure</b>
<b>Johnson</b>	<b>Ida</b>	<b>8 Sep 1928</b>	<b>11 Sep 1928</b>		<b>F-3-22</b>	<b>1</b>	<b>Meningitis simple</b>
<b>Dallmann</b>	<b>Henry</b>	<b>15 Dec 1928</b>	<b>17 Dec 1928</b>		<b>F-3-32</b>	<b>1</b>	<b>Dropsy and old age</b>
<b>Groth</b>	<b>Augusta</b>	<b>3 Aug 1929</b>	<b>6 Aug 1929</b>		<b>G-3-19</b>	<b>1</b>	<b>Heart disease</b>
<b>Olsen</b>	<b>Hanne</b>	<b>3 Sep 1929</b>	<b>6 Sep 1929</b>		<b>F-5-18</b>	<b>1</b>	<b>Cerebral hemorrhage</b>
<b>Johnson</b>	<b>Carl</b>	<b>4 Oct 1929</b>	<b>9 Oct 1929</b>		<b>F-3-22</b>	<b>1</b>	<b>Heart disease</b>
<b>Johlfs</b>	<b>Ileen</b>	<b>2 Jan 1930</b>	<b>2 Jan 1930</b>		<b>F-3-17</b>		<b>Starvation - unable to nurse</b>
<b>Lowe</b>	<b>George</b>	<b>8 May 1930</b>	<b>10 May 1930</b>		<b>G-3-6</b>	<b>1</b>	<b>Mitral insufficiency</b>

**Lakeview Cemetery - burial date, veterans, grave location, tombstone found, and cause of death - sorted by DOD**

<b>Last Name</b>	<b>First</b>	<b>DOD</b>	<b>Burial Date</b>	<b>Veteran</b>	<b>Grave Location</b>	<b>Tombstone Found</b>	<b>Cause of Death</b>
<b>Gowdy</b>	<b>Willard</b>	<b>21 Jul 1930</b>	<b>28 Jul 1930</b>		<b>F-7-3</b>		<b>Anemia - toxemia</b>
<b>Malmsten</b>	<b>Kristina</b>	<b>23 May 1932</b>	<b>26 May 1932</b>		<b>F-3-28</b>	<b>1</b>	<b>Unreadable</b>
<b>Berg</b>	<b>Bonsak</b>	<b>11 Oct 1932</b>	<b>16 Oct 1932</b>		<b>F-5-16</b>	<b>1</b>	<b>Cancer</b>
<b>Burdick</b>	<b>Darrell</b>	<b>17 Dec 1932</b>	<b>19 Dec 1932</b>		<b>F-4-19</b>	<b>1</b>	<b>Pneumonia</b>
<b>Peterson</b>	<b>Robert</b>	<b>6 Jan 1933</b>	<b>11 Jan 1933</b>		<b>F-5-7</b>	<b>1</b>	<b>Intestinal obstruction</b>
<b>Johlfs</b>	<b>Baby</b>	<b>4 May 1933</b>	<b>5 May 1933</b>		<b>F-3-18</b>		<b>Undetermined - probably congenital heart disease</b>
<b>Chambers</b>	<b>Alonzo</b>	<b>9 Aug 1933</b>	<b>11 Aug 1933</b>		<b>F-6-14</b>	<b>1</b>	<b>Acute prostatitis with abscess</b>
<b>Graff</b>	<b>Gilmore</b>	<b>26 Oct 1933</b>			<b>F-7-14</b>	<b>1</b>	<b>Drowning in boat hunting accident.</b>
<b>Pettit</b>	<b>Baby</b>	<b>31 Jul 1934</b>			<b>G-5-7</b>	<b>1</b>	<b>Stillborn</b>
<b>Harp</b>	<b>Leone</b>	<b>2 Oct 1934</b>	<b>4 Oct 1934</b>		<b>F-4-34</b>	<b>1</b>	<b>Burns from gasoline explosion - gasoline accidently poured on kitchen range fire.</b>
<b>Otten</b>	<b>Calvin</b>	<b>11 Nov 1934</b>	<b>12 Nov 1934</b>				<b>A deformed head, two thumbs on one hand and premature</b>
<b>Otten</b>	<b>Myra</b>	<b>5 Dec 1934</b>	<b>7 Dec 1934</b>				<b>Acute appendicitis</b>
<b>Johnson</b>	<b>John</b>	<b>6 Dec 1934</b>	<b>9 Dec 1934</b>		<b>G-5-1</b>	<b>1</b>	<b>Cerebral hemorrhage - stroke</b>

**Lakeview Cemetery - burial date, veterans, grave location, tombstone found, and cause of death - sorted by DOD**

<b>Last Name</b>	<b>First</b>	<b>DOD</b>	<b>Burial Date</b>	<b>Veteran</b>	<b>Grave Location</b>	<b>Tombstone Found</b>	<b>Cause of Death</b>
<b>Bern</b>	<b>Mary</b>	<b>18 Dec 1934</b>	<b>22 Dec 1934</b>		<b>G-4-6</b>		<b>Cerebral apoplexy</b>
<b>Olsen</b>	<b>Mons</b>	<b>4 Apr 1935</b>	<b>8 Apr 1935</b>		<b>F-5-17</b>	<b>1</b>	<b>Cardiac failure</b>
<b>Beseman</b>	<b>Emilie</b>	<b>12 May 1935</b>	<b>15 May 1935</b>		<b>F-4-11</b>	<b>1</b>	<b>Heart failure</b>
<b>Navakas</b>	<b>Josephine</b>	<b>3 Jul 1935</b>	<b>7 Jul 1935</b>		<b>G-3-1</b>	<b>1</b>	<b>Suicide</b>
<b>Ellis</b>	<b>Roger</b>	<b>16 Aug 1935</b>	<b>19 Aug 1935</b>		<b>G-2-5</b>	<b>1</b>	<b>Congenital stresia of rectum</b>
<b>Hart</b>	<b>Neil</b>	<b>17 Sep 1935</b>	<b>22 Sep 1935</b>		<b>G-2-17</b>	<b>1</b>	<b>Upper respiratory infection</b>
<b>Bradford</b>	<b>Jack</b>	<b>2 Nov 1935</b>			<b>G-1-12</b>	<b>1</b>	<b>Premature - 7 months</b>
<b>Dallmann</b>	<b>Augusta</b>	<b>13 Nov 1935</b>	<b>16 Nov 1935</b>		<b>F-3-31</b>	<b>1</b>	<b>Unreadable on DC</b>
<b>Pracht</b>	<b>Ferdinand</b>	<b>11 Feb 1936</b>	<b>13 Feb 1936</b>		<b>F-1-10</b>	<b>1</b>	<b>Cancer of colon</b>
<b>Gustafson</b>	<b>Eleanor</b>	<b>7 Jan 1936</b>			<b>G-2-11</b>	<b>1</b>	<b>Malignant brain tumor</b>
<b>Bergstrom</b>	<b>Loretta</b>	<b>6 Feb 1936</b>			<b>G-2-1</b>	<b>1</b>	<b>Chronic myocarditis</b>
<b>Ladeen</b>	<b>Sammy</b>	<b>12 Jun 1937</b>	<b>14 Jun 1937</b>		<b>G-6-6</b>	<b>1</b>	<b>Drowning at Tamarack Lake - fell from a row boat</b>
<b>Groth</b>	<b>Henry</b>	<b>26 Oct 1937</b>	<b>29 Oct 1937</b>		<b>F-6-4</b>	<b>1</b>	<b>Cerebral hemorrhage</b>

**Lakeview Cemetery - burial date, veterans, grave location, tombstone found, and cause of death - sorted by DOD**

<b>Last Name</b>	<b>First</b>	<b>DOD</b>	<b>Burial Date</b>	<b>Veteran</b>	<b>Grave Location</b>	<b>Tombstone Found</b>	<b>Cause of Death</b>
<b>Reynolds</b>	<b>Laurence</b>	<b>4 Nov 1937</b>	<b>6 Nov 1937</b>		<b>G-5-21</b>	<b>1</b>	<b>Malignancy</b>
<b>Cherpas</b>	<b>Frank</b>	<b>29 Nov 1937</b>	<b>3 Dec 1937</b>		<b>G-5-17</b>		<b>Lobar pneumonia</b>
<b>Johnson</b>	<b>Adolf</b>	<b>8 Dec 1937</b>	<b>11 Dec 1937</b>	<b>1</b>	<b>F-3-23</b>	<b>1</b>	<b>Ruptured aneurism of brain</b>
<b>Peterson</b>	<b>Anna</b>	<b>17 Dec 1937</b>	<b>20 Dec 1937</b>		<b>F-3-27</b>	<b>1</b>	<b>Lung cancer</b>
<b>McMillan</b>	<b>Esther</b>	<b>25 Dec 1937</b>			<b>G-5-5</b>	<b>1</b>	<b>Whooping cough and pneumonia</b>
<b>Schake</b>	<b>Arvilla</b>	<b>25 Jan 1938</b>	<b>27 Jan 1938</b>		<b>A-8-2</b>	<b>1</b>	<b>Spinal meningitis</b>
<b>Fenton</b>	<b>Bruce</b>	<b>31 Jul 1938</b>	<b>3 Aug 1938</b>		<b>F-6-1</b>	<b>1</b>	<b>Acute leukemia</b>
<b>Groth</b>	<b>William</b>	<b>22 Nov 1938</b>	<b>25 Nov 1938</b>		<b>F-4-30</b>	<b>1</b>	<b>Pneumonia from inhaling chewed up salted peanuts.</b>
<b>Chambers</b>	<b>Baby</b>	<b>3 Mar 1939</b>	<b>4 Mar 1939</b>		<b>F-6-11</b>	<b>1</b>	<b>Pulmonary hemorrhage</b>
<b>Tarr</b>	<b>Ora</b>	<b>19 May 1939</b>	<b>21 May 1939</b>		<b>F-4-7</b>	<b>1</b>	<b>Third degree burns</b>
<b>Otten</b>	<b>Jorgan</b>	<b>7 Oct 1939</b>			<b>F-7-7</b>		<b>Labor pneumonia</b>
<b>Buetow, Sr</b>	<b>Henry</b>	<b>22 Oct 1939</b>	<b>25 Oct 1939</b>		<b>F-3-6</b>	<b>1</b>	<b>Senility - pneumonia</b>
<b>Louison</b>	<b>Clarence</b>	<b>18 Apr 1940</b>	<b>22 Apr 1940</b>		<b>F-3-30</b>	<b>1</b>	<b>Lung abscess - pneumonia</b>

**Lakeview Cemetery - burial date, veterans, grave location, tombstone found, and cause of death - sorted by DOD**

<b>Last Name</b>	<b>First</b>	<b>DOD</b>	<b>Burial Date</b>	<b>Veteran</b>	<b>Grave Location</b>	<b>Tombstone Found</b>	<b>Cause of Death</b>
<b>Bern</b>	<b>William</b>	<b>10 Nov 1940</b>	<b>14 Nov 1940</b>		<b>G-4-7</b>	<b>1</b>	<b>Highway accident - shock, skull fracture, hemorrhage</b>
<b>Niesen</b>	<b>Robert</b>	<b>25 Nov 1941</b>	<b>27 Nov 1941</b>		<b>G-5-18</b>	<b>1</b>	<b>Meningitis</b>
<b>Spicer</b>	<b>Clara</b>	<b>10 Jun 1942</b>	<b>12 Jun 1942</b>		<b>F-5-9</b>	<b>1</b>	<b>Cardiac decompensation</b>
<b>Groth</b>	<b>Karleen</b>	<b>4 Jul 1942</b>	<b>7 Jul 1942</b>		<b>F-4-29</b>	<b>1</b>	<b>Bronchial pneumonia</b>
<b>Pence</b>	<b>Charles</b>	<b>5 Jul 1942</b>	<b>9 Jul 1942</b>		<b>F-5-22</b>	<b>1</b>	<b>Cerebral hemorrhage</b>
<b>Pettit</b>	<b>Rena</b>	<b>19 Aug 1942</b>			<b>G-5-8</b>	<b>1</b>	
<b>Harp</b>	<b>Jacquelyn</b>	<b>14 Jun 1943</b>	<b>18 Jun 1943</b>		<b>G-6-12</b>		<b>Cerebral hemorrhage - bruise date unknown</b>
<b>Madden</b>	<b>Thomas</b>	<b>29 Jun 1943</b>	<b>2 Jul 1943</b>	<b>1</b>	<b>F-7-13</b>	<b>1</b>	<b>Respiratory failure</b>
<b>Sjogren</b>	<b>Nancy</b>	<b>25 Sep 1943</b>	<b>28 Sep 1943</b>		<b>G-7-9</b>	<b>1</b>	<b>Mitral insufficiency</b>
<b>Comstock</b>	<b>Donald</b>	<b>17 Oct 1943</b>	<b>20 Oct 1943</b>		<b>F-3-29</b>	<b>1</b>	<b>Toxicity due to peritonitis - ruptured appendix</b>
<b>Ricker</b>	<b>Anna</b>	<b>13 Dec 1943</b>	<b>17 Dec 1943</b>		<b>G-2-25</b>	<b>1</b>	<b>Cardiac failure</b>
<b>Albright</b>	<b>John</b>	<b>3 Feb 1944</b>	<b>7 Feb 1944</b>		<b>F-5-19</b>	<b>1</b>	<b>Arterio sclerosis</b>
<b>Maruski</b>	<b>Frances</b>	<b>26 Feb 1944</b>	<b>29 Feb 1944</b>		<b>G-7-3</b>	<b>1</b>	<b>Carcinoma of breast</b>



**Lakeview Cemetery - burial date, veterans, grave location, tombstone found, and cause of death - sorted by DOD**

<b>Last Name</b>	<b>First</b>	<b>DOD</b>	<b>Burial Date</b>	<b>Veteran</b>	<b>Grave Location</b>	<b>Tombstone Found</b>	<b>Cause of Death</b>
<b>Buetow</b>	<b>Mathilda</b>	<b>28 Apr 1944</b>	<b>1 May 1944</b>		<b>F-3-5</b>	<b>1</b>	<b>Cardiac decompensation</b>
<b>Johnson</b>	<b>Nels</b>	<b>5 Oct 1944</b>	<b>5 Oct 1944</b>		<b>G-6-4</b>	<b>1</b>	<b>Bronchial pneumonia</b>
<b>Sjogren</b>	<b>Paul</b>	<b>24 Apr 1945</b>	<b>28 Apr 1945</b>		<b>G-7-13</b>	<b>1</b>	<b>Bronchial pneumonia - influenza</b>
<b>Schake</b>	<b>Walter</b>	<b>14 Jun 1945</b>	<b>15 Jun 1945</b>		<b>A-8-1</b>	<b>1</b>	<b>Premature birth</b>
<b>Long</b>	<b>Richard</b>	<b>24 Oct 1945</b>		<b>1</b>	<b>G-4-10</b>	<b>1</b>	<b>Hit by a train</b>
<b>Anderson</b>	<b>Charles</b>	<b>19 Aug 1945</b>	<b>22 Aug 1945</b>		<b>G-3-15</b>	<b>1</b>	<b>Bronchial pneumonia</b>
<b>Otten</b>	<b>William</b>	<b>1940-1950</b>			<b>F-7-5</b>		<b>Run over by train.</b>
<b>Nordquist</b>	<b>August</b>	<b>29 Mar 1946</b>			<b>G-7-6</b>	<b>1</b>	<b>Pernicious anemia</b>
<b>Amundson</b>	<b>Andrew</b>	<b>14 May 1946</b>	<b>14 May 1946</b>		<b>F-2-10</b>	<b>1</b>	<b>Hypostatic pneumonia - cerebral hemorrhage</b>
<b>Bushey</b>	<b>Geraldine</b>	<b>1 Jul 1946</b>			<b>F-2-5</b>	<b>1</b>	<b>Killed in an auto-train crash in Ohio.</b>
<b>Chambers</b>	<b>Steven</b>	<b>7 Jul 1946</b>	<b>10 Jul 1946</b>		<b>F-4-18</b>	<b>1</b>	<b>Meningitis</b>
<b>Pomplun</b>	<b>Karen</b>	<b>24 Aug 1946</b>	<b>25 Aug 1946</b>		<b>F-1-5</b>	<b>1</b>	<b>Mental deficiency</b>
<b>McMillan</b>	<b>Edward</b>	<b>3 Oct 1946</b>	<b>6 Oct 1946</b>		<b>G-5-11</b>	<b>1</b>	<b>Arteriosclerosis</b>

**Lakeview Cemetery - burial date, veterans, grave location, tombstone found, and cause of death - sorted by DOD**

<b>Last Name</b>	<b>First</b>	<b>DOD</b>	<b>Burial Date</b>	<b>Veteran</b>	<b>Grave Location</b>	<b>Tombstone Found</b>	<b>Cause of Death</b>
Lubben	Thomas	2 Apr 1947			G-1-1	1	Colon cancer - intestinal obstruction
Graff	Lewis	27 Apr 1947	1 May 1947		F-7-12	1	Chronic myocarditis
Graff	Ida	5 Sep 1947			F-7-11	1	Acute cardiac failure
Forgerson	George	28 Dec 1947	1 Jan 1948		G-2-2	1	Terminal pneumonia
Whitten	Harold	4 May 1948	8 May 1948		G-2-9	1	Cerebral hemorrhage - sudden death
Harp	Marlys	11 Jan 1948	14 Jan 1948		G-6-13	1	Bronchial pneumonia - Mongolian weakness - life
Johnson	Ida	31 May 1949	2 Jun 1949		G-5-2		Uremia
Lowry	Thomas	3 Aug 1949	4 Aug 1949		E-3-4	1	Right heart failure
Pless	Michael	22 Jan 1950	25 Jan 1950		G-4-9	1	Coronary thrombosis
Pettit	Cleveland	7 Feb 1950			G-5-9	1	
Nordquist	Lawrence	5 Apr 1950	10 Apr 1950		G-7-8	1	Coronary occlusion
Pettit	Terry	21 Aug 1950	21 Aug 1950		E-4-4	1	Child sleeping in back seat of car which caught on fire.
Louison	Clara	31 Aug 1950	4 Sep 1950		E-2-4	1	Probable aneurysm

**Lakeview Cemetery - burial date, veterans, grave location, tombstone found, and cause of death - sorted by DOD**

<b>Last Name</b>	<b>First</b>	<b>DOD</b>	<b>Burial Date</b>	<b>Veteran</b>	<b>Grave Location</b>	<b>Tombstone Found</b>	<b>Cause of Death</b>
<b>Guitare</b>	<b>David</b>	<b>14 Feb 1951</b>	<b>16 Feb 1951</b>		<b>G-1-4</b>	<b>1</b>	<b>Premature - marked atetetasis(collapse of lung tissue)</b>
<b>Pracht</b>	<b>Maria</b>	<b>21 Mar 1951</b>	<b>24 Mar 1951</b>		<b>F-1-13</b>	<b>1</b>	<b>Chronic nephritis</b>
<b>Peterson</b>	<b>John</b>	<b>28 Jun 1951</b>	<b>1 Jul 1951</b>		<b>F-3-26</b>	<b>1</b>	<b>Chronic myocarditis</b>
<b>Beseman</b>	<b>Peter</b>	<b>12 Oct 1951</b>	<b>15 Oct 1951</b>		<b>F-4-9</b>		<b>Pulmonary embolism - diabetic - both legs had been amputated</b>
<b>Berg</b>	<b>Hilda</b>	<b>21 Oct 1951</b>	<b>25 Oct 1951</b>		<b>F-5-15</b>	<b>1</b>	<b>Heart disease</b>
<b>Bushey</b>	<b>Fred</b>	<b>3 Feb 1952</b>	<b>4 Feb 1952</b>		<b>E-5-3</b>	<b>1</b>	<b>Coronary sclerosis - diabetes</b>
<b>Guitare</b>	<b>John</b>	<b>2 Apr 1952</b>	<b>5 Apr 1952</b>		<b>E-6-4</b>		<b>Chronic myocarditis</b>
<b>Wahl</b>	<b>Herman</b>	<b>17 Jun 1952</b>	<b>23 Jun 1952</b>		<b>G-7-16</b>	<b>1</b>	<b>Coronary thrombosis</b>
<b>Gilden</b>	<b>Jennie</b>	<b>4 Sep 1952</b>			<b>F-4-8</b>		<b>Acute heart failure while working in the field</b>
<b>Neubauer</b>	<b>Christine</b>	<b>21 Sep 1953</b>			<b>E-5-1</b>	<b>1</b>	
<b>Rack</b>	<b>Ernest</b>	<b>2 Feb 1953</b>	<b>7 Feb 1953</b>		<b>G-7-14</b>	<b>1</b>	
<b>Chambers</b>	<b>Ida</b>	<b>11 Mar 1953</b>	<b>15 Mar 1953</b>		<b>F-6-13</b>		<b>Cancer</b>
<b>Bushey</b>	<b>Paul</b>	<b>12 Oct 1953</b>	<b>15 Oct 1953</b>		<b>F-2-3</b>	<b>1</b>	<b>Coronary disease</b>

**Lakeview Cemetery - burial date, veterans, grave location, tombstone found, and cause of death - sorted by DOD**

<b>Last Name</b>	<b>First</b>	<b>DOD</b>	<b>Burial Date</b>	<b>Veteran</b>	<b>Grave Location</b>	<b>Tombstone Found</b>	<b>Cause of Death</b>
<b>Amundson</b>	<b>Julia</b>	<b>25 Jun 1954</b>	<b>29 Jun 1954</b>		<b>F-2-9</b>	<b>1</b>	<b>Coronary occlusion</b>
<b>Minor</b>	<b>Nellie</b>	<b>27 Jul 1954</b>	<b>30 Jul 1954</b>		<b>G-5-13</b>	<b>1</b>	<b>Myocardial infarction</b>
<b>Groth</b>	<b>Ernest</b>	<b>2 Apr 1955</b>	<b>5 Apr 1955</b>		<b>F-6-8</b>	<b>1</b>	<b>Metastatic osteogenic sarcoma</b>
<b>Goranson</b>	<b>Helga</b>	<b>18 Apr 1955</b>	<b>22 Apr 1955</b>		<b>G-2-21</b>	<b>1</b>	<b>Exanguination - carcinomatosis</b>
<b>Harp</b>	<b>Lyman</b>	<b>23 Sep 1955</b>	<b>27 Sep 1955</b>		<b>F-4-33</b>	<b>1</b>	<b>Crushed to death by a falling tree.</b>
<b>Nickoloff</b>	<b>Martin</b>	<b>2 Oct 1955</b>	<b>5 Oct 1955</b>				<b>Coronary occlusion</b>
<b>Dahlman</b>	<b>Emil</b>	<b>27 Jan 1956</b>	<b>30 Jan 1956</b>		<b>E-2-3</b>	<b>1</b>	<b>Septicemia acute</b>
<b>Pomplun</b>	<b>Barbara</b>	<b>12 Apr 1956</b>	<b>16 Apr 1956</b>		<b>F-1-4</b>	<b>1</b>	<b>Multiple fractures - internal injuries</b>
<b>Nordquist</b>	<b>Annie</b>	<b>5 Nov 1956</b>	<b>9 Nov 1956</b>		<b>G-7-7</b>	<b>1</b>	<b>Coronary occlusion</b>
<b>Guitare</b>	<b>Agnes</b>	<b>10 Mar 1957</b>	<b>13 Mar 1957</b>		<b>E-6-3</b>		<b>Chronic myocarditis</b>
<b>Long</b>	<b>Henry</b>	<b>12 Mar 1957</b>	<b>15 Mar 1957</b>		<b>E-7-4</b>	<b>1</b>	<b>Terminal bronchopneumonia</b>
<b>Moen</b>	<b>Fred</b>	<b>20 Feb 1958</b>	<b>24 Feb 1958</b>		<b>E-8-4</b>	<b>1</b>	<b>Cerebral thrombosis</b>
<b>Spicer</b>	<b>Jennie</b>	<b>23 May 1958</b>	<b>26 May 1958</b>		<b>F-5-8</b>	<b>1</b>	<b>Labor pneumonia</b>

**Lakeview Cemetery - burial date, veterans, grave location, tombstone found, and cause of death - sorted by DOD**

<b>Last Name</b>	<b>First</b>	<b>DOD</b>	<b>Burial Date</b>	<b>Veteran</b>	<b>Grave Location</b>	<b>Tombstone Found</b>	<b>Cause of Death</b>
<b>Skarland</b>	<b>Minnie</b>	<b>4 Oct 1959</b>	<b>8 Oct 1959</b>		<b>F-3-21</b>	<b>1</b>	<b>Myocardial infarction</b>
<b>Albright</b>	<b>Anna</b>	<b>29 Feb 1960</b>	<b>3 Mar 1960</b>		<b>E-1-4</b>	<b>1</b>	<b>Pulmonary embolis</b>
<b>Bradford</b>	<b>Ruth</b>	<b>3 Mar 1960</b>	<b>7 Mar 1960</b>		<b>G-1-13</b>	<b>1</b>	<b>Massive pulmonary infarction</b>
<b>Johnson</b>	<b>Peter</b>	<b>15 Apr 1960</b>	<b>20 Apr 1960</b>		<b>E-4-3</b>		<b>Myocardial infarction</b>
<b>Goranson</b>	<b>George</b>	<b>5 Jul 1960</b>	<b>8 Jul 1960</b>		<b>G-2-20</b>	<b>1</b>	<b>Pulmonary embolism</b>
<b>Schlive</b>	<b>William</b>	<b>24 Aug 1960</b>	<b>27 Aug 1960</b>		<b>F-1-8</b>	<b>1</b>	<b>Pneumonia</b>
<b>McMillan</b>	<b>Margaret</b>	<b>15 Sep 1960</b>			<b>G-5-12</b>	<b>1</b>	<b>Cerebral thrombosis</b>
<b>Zirbel</b>	<b>Clarence</b>	<b>7 Nov 1960</b>			<b>D-1-4</b>	<b>1</b>	<b>Suicide - .22 cal rifle bullet in head</b>
<b>Stenson</b>	<b>Carl</b>	<b>27 Nov 1960</b>	<b>30 Nov 1960</b>		<b>G-3-11</b>	<b>1</b>	<b>Coronary occlusion</b>
<b>Anderson</b>	<b>Evert</b>	<b>28 Nov 1960</b>	<b>2 Dec 1960</b>		<b>D-2-4</b>	<b>1</b>	<b>Tractor overturned on top of him crushing him.</b>
<b>Gustafson</b>	<b>Vernon</b>	<b>29 Apr 1961</b>	<b>2 May 1961</b>	<b>1</b>	<b>G-2-12</b>	<b>1</b>	<b>Cerebral hemorrhage</b>
<b>Burdick</b>	<b>Olga</b>	<b>12 Jun 1961</b>	<b>15 Jun 1961</b>		<b>F-4-20</b>	<b>1</b>	<b>Right ventricular heart failure</b>
<b>Fenton</b>	<b>Charles</b>	<b>22 Jun 1961</b>	<b>24 Jun 1961</b>		<b>F-3-8</b>	<b>1</b>	<b>Pneumonia</b>

**Lakeview Cemetery - burial date, veterans, grave location, tombstone found, and cause of death - sorted by DOD**

<b>Last Name</b>	<b>First</b>	<b>DOD</b>	<b>Burial Date</b>	<b>Veteran</b>	<b>Grave Location</b>	<b>Tombstone Found</b>	<b>Cause of Death</b>
<b>Whitten</b>	<b>May</b>	<b>3 Jul 1961</b>	<b>7 Jul 1961</b>		<b>G-2-8</b>	<b>1</b>	<b>Cerebral thrombosis</b>
<b>LeBlue</b>	<b>Calma</b>	<b>21 Nov 1962</b>	<b>24 Nov 1962</b>		<b>F-2-3</b>	<b>1</b>	<b>Rheumatoid arthritis</b>
<b>Groth</b>	<b>Augusta</b>	<b>31 Dec 1962</b>	<b>3 Jan 1963</b>		<b>G-3-21</b>	<b>1</b>	<b>Unreadable on DC</b>
<b>Otten</b>	<b>Anna</b>	<b>29 Jan 1963</b>	<b>1 Feb 1963</b>		<b>E-4-2</b>	<b>1</b>	<b>Coronary infarction</b>
<b>Pence</b>	<b>Effie</b>	<b>15 Jun 1963</b>	<b>16 Jun 1963</b>		<b>F-5-21</b>	<b>1</b>	<b>Pulmonary embolism - ovarian cancer</b>
<b>Groth</b>	<b>Amy</b>	<b>3 Oct 1963</b>			<b>F-4-28</b>	<b>1</b>	
<b>Peterson</b>	<b>Klarice</b>	<b>24 Oct 1963</b>	<b>28 Oct 1963</b>		<b>E-8-2</b>	<b>1</b>	<b>Cerebral hemorrhage</b>
<b>Beseman</b>	<b>Fred</b>	<b>27 Oct 1963</b>	<b>30 Oct 1963</b>		<b>G-3-2</b>	<b>1</b>	<b>Cardiac failure</b>
<b>Gustafson</b>	<b>Signe</b>	<b>2 Nov 1963</b>	<b>6 Nov 1963</b>		<b>G-2-15</b>	<b>1</b>	<b>Colon cancer</b>
<b>Fenton</b>	<b>Mary</b>	<b>12 Aug 1964</b>	<b>15 Aug 1964</b>		<b>F-3-9</b>	<b>1</b>	<b>Pneumonia</b>
<b>Johnson</b>	<b>John</b>	<b>5 Oct 1964</b>	<b>8 Oct 1964</b>		<b>E-7-3</b>		<b>Heart disease</b>
<b>Kisler</b>	<b>Jennie</b>	<b>8 Oct 1964</b>	<b>10 Oct 1964</b>		<b>G-2-4</b>	<b>1</b>	<b>Carcinoma of right kidney with abscess</b>
<b>Kirzy</b>	<b>Agnes</b>	<b>20 Dec 1964</b>	<b>24 Dec 1964</b>		<b>F-4-3</b>	<b>1</b>	<b>Apparent heart failure</b>

**Lakeview Cemetery - burial date, veterans, grave location, tombstone found, and cause of death - sorted by DOD**

<b>Last Name</b>	<b>First</b>	<b>DOD</b>	<b>Burial Date</b>	<b>Veteran</b>	<b>Grave Location</b>	<b>Tombstone Found</b>	<b>Cause of Death</b>
Schake	Margaret	10 Feb 1965	13 Feb 1965		A-8-3	1	Myocardial disease - diabetes
Nordquist	John	3 Jun 1965	4 Jun 1965		D-3-4	1	Myocardial infarction
Lubben Schlive	Della	7 Sep 1965	9 Sep 1965		F-1-7	1	Pneumonia
Newstrom	Marie	31 Oct 1965	3 Nov 1965		F-3-16	1	Cerebral thrombosis
Newstrom	Albert	23 Dec 1965	26 Dec 1965		F-3-15	1	Coronary occlusion
Anderson	Oscar	20 Jan 1966	22 Jan 1966		E-1-2	1	Metastatic sarcoma
Sjogren	Nels	15 Apr 1966	18 Apr 1966	1	D-4-4	1	Acute myocardial infarction
Stenson	Julia	6 May 1966	6 May 1966		G-3-12	1	Cerebral hemorrhage
Hotchkiss	Frank	30 Jul 1966			C-1-4	1	
Nosteby	Gullik	30 Sep 1966	4 Oct 1966		E-6-1	1	Cerebral thrombosis
Otten	Henry	6 Dec 1966	9 Dec 1966		C-2-4	1	Pneumonia
Lowry	William	16 Mar 1967	19 Mar 1967		E-3-2	1	Blood loss anemia - liver failure
Kumm	Jesse	20 May 1967	21 May 1967	1	C-3-3	1	Coronary heart disease

**Lakeview Cemetery - burial date, veterans, grave location, tombstone found, and cause of death - sorted by DOD**

<b>Last Name</b>	<b>First</b>	<b>DOD</b>	<b>Burial Date</b>	<b>Veteran</b>	<b>Grave Location</b>	<b>Tombstone Found</b>	<b>Cause of Death</b>
<b>Pracht</b>	<b>Henry</b>	<b>7 Sep 1967</b>	<b>11 Sep 1967</b>		<b>F-1-12</b>	<b>1</b>	<b>Shock, liver failure</b>
<b>Johnson</b>	<b>Emelia</b>	<b>9 Sep 1967</b>	<b>12 Sep 1967</b>		<b>B-1-4</b>	<b>1</b>	<b>Cerebral vascular thrombosis</b>
<b>Forgerson</b>	<b>Bertha</b>	<b>17 Sep 1967</b>	<b>21 Sep 1967</b>		<b>G-2-3</b>	<b>1</b>	<b>Terminal broncho pneumonia</b>
<b>Albright</b>	<b>Margaret</b>	<b>20 Oct 1967</b>	<b>24 Oct 1967</b>		<b>F-5-20</b>	<b>1</b>	<b>Terminal pneumonia</b>
<b>Sorenson</b>	<b>Merlyn</b>	<b>15 Dec 1967</b>	<b>18 Dec 1967</b>	<b>1</b>	<b>D-8-1</b>	<b>1</b>	
<b>Anderson</b>	<b>Richard</b>	<b>1 Sep 1968</b>	<b>13 Sep 1968</b>	<b>1</b>	<b>D-2-3</b>	<b>1</b>	<b>Died from injuries in an auto accident.</b>
<b>Albright</b>	<b>Manuel</b>	<b>26 Jan 1969</b>	<b>29 Jan 1969</b>		<b>E-1-3</b>	<b>1</b>	<b>Cardiac arrest</b>
<b>Groth</b>	<b>Oscar</b>	<b>28 Jan 1969</b>	<b>1 Feb 1969</b>		<b>F-6-6</b>	<b>1</b>	<b>Cerebral hemorrhage</b>
<b>Sarvela</b>	<b>Franklin</b>	<b>4 Oct 1969</b>	<b>8 Oct 1969</b>		<b>C-2-3</b>	<b>1</b>	<b>Airplane crash - extensive trauma of face and brain.</b>
<b>Harp</b>	<b>Hazel</b>	<b>24 Jun 1970</b>	<b>27 Jun 1970</b>		<b>G-6-14</b>	<b>1</b>	<b>Grade III astrocytoma - brain tumor</b>
<b>Hotchkiss</b>	<b>Helen</b>	<b>20 Sep 1970</b>	<b>24 Sep 1970</b>		<b>C-1-3</b>	<b>1</b>	
<b>Stenson</b>	<b>John</b>	<b>27 Sep 1970</b>	<b>30 Sep 1970</b>	<b>1</b>	<b>A-1-1</b>	<b>1</b>	<b>Pneumonitis - probably radiation from therapy - cobalt 60 to lung</b>
<b>Gustafson</b>	<b>Walter</b>	<b>27 Sep 1970</b>	<b>1 Oct 1970</b>		<b>G-2-13</b>	<b>1</b>	<b>Gunshot wound</b>



**Lakeview Cemetery - burial date, veterans, grave location, tombstone found, and cause of death - sorted by DOD**

<b>Last Name</b>	<b>First</b>	<b>DOD</b>	<b>Burial Date</b>	<b>Veteran</b>	<b>Grave Location</b>	<b>Tombstone Found</b>	<b>Cause of Death</b>
<b>Groth</b>	<b>Elcey</b>	<b>19 Apr 1971</b>	<b>22 Apr 1971</b>		<b>G-3-20</b>	<b>1</b>	<b>Cerebrovascular accident</b>
<b>Hamren</b>	<b>Kenneth</b>	<b>19 May 1971</b>	<b>22 May 1971</b>	<b>1</b>	<b>H-3-8</b>	<b>1</b>	<b>Died in a van/truck accident 3.5 west of Cromwell on highway 210.</b>
<b>Sanvig</b>	<b>Corrine</b>	<b>10 Jul 1971</b>	<b>13 Jul 1971</b>		<b>B-2-4</b>	<b>1</b>	<b>Breast cancer</b>
<b>Bradford</b>	<b>Forrest</b>	<b>22 Jul 1971</b>	<b>25 Jul 1971</b>	<b>1</b>	<b>G-1-10</b>	<b>1</b>	<b>Acute arrhythmia - diabetes</b>
<b>McLain</b>	<b>Walter</b>	<b>25 Oct 1971</b>	<b>27 Oct 1971</b>		<b>C-3-2</b>	<b>1</b>	<b>Cerebral vascular accident</b>
<b>Wickstrand</b>	<b>John</b>	<b>1 Nov 1971</b>			<b>A-7-1</b>		
<b>Pomplun</b>	<b>Charles</b>	<b>28 Jan 1972</b>	<b>31 Jan 1972</b>		<b>F-1-3</b>	<b>1</b>	<b>Influenza</b>
<b>Norton</b>	<b>Edwin</b>	<b>4 Apr 1972</b>	<b>7 Apr 1972</b>		<b>D-6-3</b>	<b>1</b>	<b>Cerebral vascular accident</b>
<b>Amundson</b>	<b>Palmer</b>	<b>5 Apr 1972</b>	<b>8 Apr 1972</b>	<b>1</b>	<b>F-2-7</b>	<b>1</b>	<b>Pneumonia</b>
<b>Nosteby</b>	<b>Ella</b>	<b>13 Aug 1972</b>	<b>15 Aug 1972</b>		<b>E-6-2</b>	<b>1</b>	<b>Cerebral thrombosis</b>
<b>Norton</b>	<b>Marie</b>	<b>8 Sep 1972</b>	<b>11 Sep 1972</b>		<b>G-2-27</b>	<b>1</b>	<b>CVA</b>
<b>Otten</b>	<b>John</b>	<b>25 Dec 1972</b>	<b>28 Dec 1972</b>		<b>E-4-1</b>	<b>1</b>	<b>Myocardial infarction</b>
<b>Groth</b>	<b>Duane</b>	<b>21 Apr 1973</b>	<b>24 Apr 1973</b>	<b>1</b>	<b>A-2-1</b>	<b>1</b>	<b>Multiple head injuries - automobile accident</b>

**Lakeview Cemetery - burial date, veterans, grave location, tombstone found, and cause of death - sorted by DOD**

<b>Last Name</b>	<b>First</b>	<b>DOD</b>	<b>Burial Date</b>	<b>Veteran</b>	<b>Grave Location</b>	<b>Tombstone Found</b>	<b>Cause of Death</b>
<b>Skarland</b>	<b>George</b>	<b>8 Jun 1973</b>	<b>11 Jun 1973</b>	<b>1</b>	<b>F-3-20</b>	<b>1</b>	<b>Congestive failure - myocardial disease</b>
<b>Toole</b>	<b>Ruth</b>	<b>25 Jun 1973</b>	<b>28 Jun 1973</b>		<b>D-4-2</b>	<b>1</b>	<b>Massive myocardial infarction</b>
<b>Johnson</b>	<b>Walter</b>	<b>3 Aug 1973</b>	<b>6 Aug 1973</b>		<b>B-1-3</b>	<b>1</b>	<b>Septicemia</b>
<b>Norton</b>	<b>Lester</b>	<b>1 Apr 1974</b>	<b>4 Apr 1974</b>		<b>G-2-26</b>	<b>1</b>	<b>Liver cancer</b>
<b>Stenson</b>	<b>Vernon</b>	<b>13 Jul 1974</b>	<b>16 Jul 1974</b>		<b>A-1-3</b>	<b>1</b>	<b>Acute myocardial infarction</b>
<b>Gisler</b>	<b>Lela</b>	<b>12 Aug 1974</b>	<b>15 Aug 1974</b>		<b>C-4-4</b>	<b>1</b>	<b>Head injuries sustained in one-car accident</b>
<b>Norton</b>	<b>Wilfred</b>	<b>21 Sep 1974</b>	<b>25 Sep 1974</b>		<b>G-2-30</b>	<b>1</b>	<b>Esophageal hemorrhage - cirrhosis of liver</b>
<b>Niesen</b>	<b>Lawrence</b>	<b>24 Sep 1974</b>	<b>26 Sep 1974</b>	<b>1</b>	<b>G-5-19</b>	<b>1</b>	<b>Coronary occlusion</b>
<b>Otten</b>	<b>Etta</b>	<b>5 Nov 1974</b>			<b>C-2-5</b>	<b>1</b>	<b>Coronary occlusion-psychosis with mental deficiency</b>
<b>Pettit</b>	<b>Darrell</b>	<b>7 Nov 1974</b>	<b>9 Nov 1974</b>		<b>G-2-33</b>	<b>1</b>	<b>Skull fracture - laceration of the brain</b>
<b>McLain</b>	<b>Gertrude</b>	<b>11 Feb 1975</b>	<b>14 Feb 1975</b>		<b>C-3-1</b>	<b>1</b>	<b>Cachexia (deterioration of physical condition)</b>
<b>Moen</b>	<b>Marie</b>	<b>26 Feb 1975</b>	<b>1 Mar 1975</b>		<b>E-8-3</b>	<b>1</b>	<b>Terminal pneumonia</b>
<b>Lowe Wendt</b>	<b>Olga</b>	<b>23 Jul 1975</b>	<b>25 Jul 1975</b>		<b>G-3-3</b>	<b>1</b>	<b>Cardio respiratory collapse</b>

**Lakeview Cemetery - burial date, veterans, grave location, tombstone found, and cause of death - sorted by DOD**

<b>Last Name</b>	<b>First</b>	<b>DOD</b>	<b>Burial Date</b>	<b>Veteran</b>	<b>Grave Location</b>	<b>Tombstone Found</b>	<b>Cause of Death</b>
<b>Groth</b>	<b>Elvira</b>	<b>16 Nov 1975</b>	<b>20 Nov 1975</b>		<b>F-6-9</b>	<b>1</b>	
<b>Gisler</b>	<b>Frank</b>	<b>23 Nov 1975</b>	<b>26 Nov 1975</b>		<b>C-4-3</b>	<b>1</b>	<b>Cardiac disease</b>
<b>Johnson</b>	<b>Edna</b>	<b>14 Feb 1976</b>	<b>17 Feb 1975</b>		<b>E-7-1</b>	<b>1</b>	<b>Coronary occlusion</b>
<b>Bushey</b>	<b>Mildred</b>	<b>22 May 1976</b>	<b>24 May 1976</b>		<b>E-5-2</b>	<b>1</b>	<b>Pneumonia - diabetes</b>
<b>Kumm</b>	<b>Margaret</b>	<b>22 Oct 1976</b>	<b>26 Oct 1976</b>		<b>C-3-4</b>	<b>1</b>	<b>Renal failure</b>
<b>Anderson</b>	<b>Olga</b>	<b>17 Dec 1976</b>	<b>20 Dec 1976</b>		<b>E-1-1</b>	<b>1</b>	<b>Pneumonia - respiratory arrest</b>
<b>Schmidt</b>	<b>Andres</b>	<b>23 Feb 1977</b>	<b>26 Feb 1977</b>	<b>1</b>	<b>H-1-11</b>	<b>1</b>	<b>Myocardial infarction</b>
<b>Lowry</b>	<b>Martha</b>	<b>2 Mar 1977</b>			<b>E-3-3</b>	<b>1</b>	
<b>McMillan</b>	<b>Flora</b>	<b>23 Jun 1977</b>	<b>27 Jun 1977</b>		<b>G-5-6</b>	<b>1</b>	<b>Anoxia - acute CHF</b>
<b>Sjogren</b>	<b>Anna</b>	<b>2 Jan 1978</b>	<b>6 Jan 1978</b>		<b>G-7-12</b>	<b>1</b>	<b>Cerebral vascular insufficiency</b>
<b>Sjogren</b>	<b>Oscar</b>	<b>30 Jan 1978</b>	<b>2 Feb 1978</b>		<b>G-7-11</b>	<b>1</b>	<b>Acute myocardial infarction</b>
<b>Hart</b>	<b>Wesley</b>	<b>14 Apr 1978</b>		<b>1</b>	<b>H-1-2</b>	<b>1</b>	<b>Laceration left ventricle</b>
<b>Dam</b>	<b>Nels</b>	<b>16 Mar 1978</b>	<b>20 Mar 1978</b>	<b>1</b>	<b>F-5-13</b>	<b>1</b>	<b>Cerebral thrombosis</b>

**Lakeview Cemetery - burial date, veterans, grave location, tombstone found, and cause of death - sorted by DOD**

<b>Last Name</b>	<b>First</b>	<b>DOD</b>	<b>Burial Date</b>	<b>Veteran</b>	<b>Grave Location</b>	<b>Tombstone Found</b>	<b>Cause of Death</b>
<b>Peterson</b>	<b>Emil</b>	<b>7 Jan 1980</b>	<b>11 Jan 1980</b>		<b>E-8-1</b>	<b>1</b>	<b>Myocardial infarction</b>
<b>Sjogren</b>	<b>Paul</b>	<b>20 Feb 1980</b>	<b>21 Feb 1980</b>	<b>1</b>	<b>G-7-10</b>	<b>1</b>	<b>Pneumonia</b>
<b>Buetow</b>	<b>Henry</b>	<b>3 Mar 1980</b>	<b>6 Mar 1980</b>	<b>1</b>	<b>F-3-4</b>	<b>1</b>	<b>ASHD with CHF arrhythmia - emphysema</b>
<b>Goranson</b>	<b>Theodore</b>	<b>23 May 1980</b>	<b>28 May 1980</b>	<b>1</b>	<b>H-2-15</b>	<b>1</b>	<b>Myocardial infarction</b>
<b>Kisler</b>	<b>Lowell</b>	<b>19 Oct 1980</b>	<b>22 Oct 1980</b>		<b>G-2-6</b>	<b>1</b>	<b>Cardiac arrest</b>
<b>Harp</b>	<b>Lloyd</b>	<b>10 Nov 1981</b>		<b>1</b>	<b>G-6-15</b>	<b>1</b>	
<b>Pomplun</b>	<b>Bertha</b>	<b>21 May 1982</b>	<b>25 May 1982</b>		<b>F-1-2</b>	<b>1</b>	<b>Cerebrovascular accident</b>
<b>Cann</b>	<b>Rose</b>	<b>18 Nov 1982</b>	<b>20 Nov 1982</b>		<b>F-7-10</b>	<b>1</b>	<b>Cardio vascular collapse</b>
<b>Bradford</b>	<b>Barry</b>	<b>2 Mar 1983</b>	<b>6 Mar 1983</b>		<b>G-1-9</b>	<b>1</b>	<b>Accidental - hit by rebounding tree in woods</b>
<b>Groth</b>	<b>Carl</b>	<b>4 Apr 1983</b>			<b>F-4-27</b>	<b>1</b>	
<b>Peterson</b>	<b>Carl</b>	<b>27 Apr 1983</b>	<b>30 Apr 1983</b>		<b>F-3-25</b>	<b>1</b>	<b>Cardio pulmonary arrest</b>
<b>Hart</b>	<b>Clarence</b>	<b>26 Aug 1983</b>	<b>29 Aug 1983</b>		<b>H-1-5</b>	<b>1</b>	<b>Cardiac arrest</b>
<b>Johnson</b>	<b>Henry</b>	<b>20 Sep 1983</b>	<b>22 Sep 1983</b>		<b>E-7-2</b>	<b>1</b>	<b>Cardio pulmonary arrest</b>

**Lakeview Cemetery - burial date, veterans, grave location, tombstone found, and cause of death - sorted by DOD**

<b>Last Name</b>	<b>First</b>	<b>DOD</b>	<b>Burial Date</b>	<b>Veteran</b>	<b>Grave Location</b>	<b>Tombstone Found</b>	<b>Cause of Death</b>
<b>Amundson</b>	<b>Hilda</b>	<b>15 Dec 1983</b>	<b>22 Dec 1983</b>		<b>F-2-6</b>		<b>Terminal pneumonia</b>
<b>Pettit</b>	<b>Alfred</b>	<b>11 Feb 1984</b>	<b>14 Feb 1984</b>	<b>1</b>	<b>G-5-14</b>	<b>1</b>	<b>Congestive heart failure</b>
<b>Harp</b>	<b>Ada</b>	<b>12 Mar 1984</b>	<b>14 Mar 1984</b>		<b>F-4-31</b>	<b>1</b>	<b>Cardiac arrest</b>
<b>Borchardt</b>	<b>Elvie</b>	<b>7 Oct 1984</b>	<b>9 Oct 1984</b>		<b>D-1-2</b>	<b>1</b>	<b>Uremia - renal transplant rejection</b>
<b>Groth</b>	<b>Gerald</b>	<b>30 Nov 1984</b>	<b>3 Dec 1984</b>	<b>1</b>	<b>F-6-10</b>	<b>1</b>	<b>Cardiac arrest</b>
<b>Johnson</b>	<b>Della</b>	<b>21 Mar 1985</b>	<b>25 Mar 1985</b>		<b>F-5-6</b>	<b>1</b>	<b>Cardio respiratory arrest</b>
<b>Hugdahl</b>	<b>Carl</b>	<b>9 Jan 1986</b>	<b>11 Jan 1986</b>	<b>1</b>	<b>A-8-5</b>	<b>1</b>	<b>Cardiac pulmonary failure</b>
<b>Dam, Jr.</b>	<b>Nels</b>	<b>28 Feb 1986</b>	<b>Spring 1986</b>		<b>F-5-1</b>	<b>1</b>	<b>Cardio pulmonary arrest</b>
<b>Kirzy</b>	<b>Joseph</b>	<b>25 Mar 1986</b>	<b>Spring 1986</b>		<b>F-4-2</b>	<b>1</b>	<b>Senile emphysema with small left pneumothorax</b>
<b>Graff</b>	<b>Walter</b>	<b>26 Dec 1986</b>	<b>30 Dec 1986</b>		<b>H-3-15</b>	<b>1</b>	<b>Respiratory failure</b>
<b>Hamren</b>	<b>Lorraine</b>	<b>2 Apr 1987</b>	<b>6 Apr 1987</b>		<b>H-3-7</b>	<b>1</b>	<b>Suffered a stroke at her home about two weeks prior to her death.</b>
<b>Goranson</b>	<b>Gilbert</b>	<b>8 Sep 1987</b>			<b>G-2-18</b>	<b>1</b>	<b>Acute myocardial infarction</b>
<b>Peterson</b>	<b>Ellen</b>	<b>22 Mar 1988</b>	<b>25 Mar 1988</b>		<b>F-3-24</b>	<b>1</b>	<b>Terminal pneumonia</b>

**Lakeview Cemetery - burial date, veterans, grave location, tombstone found, and cause of death - sorted by DOD**

<b>Last Name</b>	<b>First</b>	<b>DOD</b>	<b>Burial Date</b>	<b>Veteran</b>	<b>Grave Location</b>	<b>Tombstone Found</b>	<b>Cause of Death</b>
<b>Johnson</b>	<b>Gustave</b>	<b>21 Nov 1988</b>	<b>25 Nov 1988</b>	<b>1</b>	<b>F-5-5</b>	<b>1</b>	<b>Pneumonia</b>
<b>Hotchkiss</b>	<b>Frank</b>	<b>1 Jan 1989</b>			<b>C-1-2</b>	<b>1</b>	<b>Pancytopenia (shortage of all types of blood cells) with myelofibrosis</b>
<b>Nordquist</b>	<b>Martha</b>	<b>7 Mar 1989</b>			<b>D-3-3</b>	<b>1</b>	
<b>Groth</b>	<b>Neal</b>	<b>7 Mar 1989</b>		<b>1</b>	<b>A-3-1</b>	<b>1</b>	<b>Massive cerebral hemorrhage</b>
<b>Hart</b>	<b>Hazel</b>	<b>23 Sep 1989</b>			<b>H-1-6</b>	<b>1</b>	<b>Cardio respiratory failure</b>
<b>Stenson</b>	<b>Lorraine</b>	<b>15 Nov 1989</b>	<b>18 Nov 1989</b>		<b>B-1-2</b>	<b>1</b>	<b>Pneumonia</b>
<b>McMillan</b>	<b>Harold</b>	<b>12 May 1990</b>			<b>G-5-4</b>		<b>Colon cancer</b>
<b>Crotteau</b>	<b>Justine</b>	<b>15 Jun 1990</b>			<b>A-7-2</b>	<b>1</b>	<b>Respiratory failure</b>
<b>Sorenson</b>	<b>Ronald</b>	<b>11 Mar 1991</b>	<b>15 Mar 1991</b>		<b>D-8-3</b>	<b>1</b>	<b>Metastatic rectal cancer</b>
<b>Chambers</b>	<b>Ruth</b>	<b>25 Jun 1991</b>			<b>F-4-17</b>	<b>1</b>	<b>Cancer</b>
<b>Paukert</b>	<b>Dorothy</b>	<b>11 Aug 1991</b>			<b>D-2-5</b>	<b>1</b>	<b>Lung cancer</b>
<b>Groth</b>	<b>Grace</b>	<b>16 Aug 1991</b>			<b>F-6-7</b>	<b>1</b>	<b>Pneumonia - crippling arthritis</b>
<b>Schake</b>	<b>Clarence</b>	<b>19 Aug 1991</b>			<b>A-8-4</b>	<b>1</b>	<b>Respiratory failure</b>

**Lakeview Cemetery - burial date, veterans, grave location, tombstone found, and cause of death - sorted by DOD**

<b>Last Name</b>	<b>First</b>	<b>DOD</b>	<b>Burial Date</b>	<b>Veteran</b>	<b>Grave Location</b>	<b>Tombstone Found</b>	<b>Cause of Death</b>
<b>Hugdahl</b>	<b>Carol</b>	<b>1 Jan 1992</b>			<b>A-8-5</b>	<b>1</b>	<b>Respiratory failure - emphysema</b>
<b>Gustafson</b>	<b>Edith</b>	<b>7 May 1992</b>			<b>G-2-14</b>	<b>1</b>	<b>Pneumonia- impaired immunity</b>
<b>Pino</b>	<b>Fred</b>	<b>25 Aug 1992</b>			<b>H-4-8</b>	<b>1</b>	<b>Prostate cancer</b>
<b>Groth</b>	<b>Russell</b>	<b>10 Sep 1992</b>		<b>1</b>	<b>A-2-4</b>	<b>1</b>	<b>Pneumonia</b>
<b>Chambers</b>	<b>James</b>	<b>4 Oct 1992</b>			<b>F-4-14</b>	<b>1</b>	<b>Sudden death</b>
<b>Maruski</b>	<b>George</b>	<b>29 Dec 1992</b>			<b>D-2-1</b>	<b>1</b>	<b>Cancer of prostate</b>
<b>Bradford</b>	<b>Gordon</b>	<b>4 Jan 1993</b>	<b>13 Jan 1993</b>	<b>1</b>	<b>G-1-14</b>	<b>1</b>	
<b>Sanvig</b>	<b>Selmar</b>	<b>13 May 1993</b>	<b>17 May 1993</b>	<b>1</b>	<b>B-2-3</b>	<b>1</b>	<b>Coronary artery disease</b>
<b>Pettit</b>	<b>Lawrence</b>	<b>28 May 1993</b>			<b>G-5-16</b>	<b>1</b>	<b>Cardiac arrest</b>
<b>Albright</b>	<b>Willie</b>	<b>20 Jun 1993</b>	<b>23 Jun 1993</b>		<b>H-2-14</b>	<b>1</b>	<b>Pulmonary edema</b>
<b>Pettit</b>	<b>Arthur</b>	<b>25 May 1994</b>			<b>H-3-1</b>	<b>1</b>	<b>Pulmonary embolis - hip fracture</b>
<b>Dam</b>	<b>Ida</b>	<b>12 Jan 1995</b>			<b>F-5-14</b>	<b>1</b>	<b>Aspiration pneumonia</b>
<b>Jauss</b>	<b>Bernice</b>	<b>18 Sep 1995</b>	<b>22 Sep 1995</b>		<b>H-2-8</b>	<b>1</b>	<b>Heart disease</b>

**Lakeview Cemetery - burial date, veterans, grave location, tombstone found, and cause of death - sorted by DOD**

<b>Last Name</b>	<b>First</b>	<b>DOD</b>	<b>Burial Date</b>	<b>Veteran</b>	<b>Grave Location</b>	<b>Tombstone Found</b>	<b>Cause of Death</b>
<b>McMillan</b>	<b>Steve</b>	<b>10 Oct 1995</b>	<b>16 Oct 1995</b>		<b>G-5-3</b>	<b>1</b>	
<b>Kisler</b>	<b>Nancy</b>	<b>27 Jun 1996</b>	<b>2 Jul 1996</b>		<b>H-3-3</b>	<b>1</b>	<b>Bilateral pulmonary emboli</b>
<b>Maruski</b>	<b>Andrew</b>	<b>24 Dec 1996</b>	<b>28 Dec 1996</b>		<b>G-7-2</b>	<b>1</b>	<b>Cardiac arrest</b>
<b>Otten</b>	<b>George</b>	<b>31 Dec 1996</b>	<b>2 Jan 1996</b>				<b>Found slumped in doorway of bedroom from CO poisoning.</b>
<b>Sjogren</b>	<b>Pauline</b>	<b>26 Jan 1997</b>	<b>30 Jan 1997</b>	<b>1</b>	<b>G-7-5</b>	<b>1</b>	<b>Congestive heart failure</b>
<b>Hotchkiss</b>	<b>Martha</b>	<b>30 Aug 1997</b>	<b>4 Sep 1997</b>		<b>C-1-1</b>	<b>1</b>	<b>Cardio pulmonary arrest</b>
<b>Stenson</b>	<b>Walter</b>	<b>5 May 1998</b>	<b>8 May 1997</b>		<b>B-1-1</b>	<b>1</b>	<b>Alzheimers</b>
<b>Groth</b>	<b>Marlene</b>	<b>9 May 1998</b>			<b>A-3-2</b>	<b>1</b>	
<b>Bradford</b>	<b>Julia</b>	<b>7 Apr 1999</b>	<b>9 Apr 1999</b>		<b>G-1-11</b>	<b>1</b>	<b>CHF, CAO</b>
<b>Pino</b>	<b>Hazel</b>	<b>22 Apr 1999</b>	<b>26 Apr 1999</b>		<b>H-4-7</b>	<b>1</b>	<b>Heart failure</b>
<b>Anderson</b>	<b>Rose</b>	<b>10 Mar 2000</b>	<b>14 Mar 2000</b>		<b>H-2-13</b>	<b>1</b>	<b>Cardiovascular disease</b>
<b>Oja</b>	<b>Maxine</b>	<b>5 Jun 2000</b>			<b>H-5-14</b>	<b>1</b>	<b>Chronic renal failure</b>
<b>Pracht</b>	<b>Viola</b>	<b>22 Dec 2000</b>	<b>Spring 2001</b>		<b>F-1-11</b>	<b>1</b>	<b>Pneumonia</b>



**Lakeview Cemetery - burial date, veterans, grave location, tombstone found, and cause of death - sorted by DOD**

<b>Last Name</b>	<b>First</b>	<b>DOD</b>	<b>Burial Date</b>	<b>Veteran</b>	<b>Grave Location</b>	<b>Tombstone Found</b>	<b>Cause of Death</b>
<b>Kemi</b>	<b>Laverne</b>	<b>23 Mar 2001</b>	<b>1 May 2001</b>		<b>G-6-7</b>	<b>1</b>	<b>Arteriosclerosis</b>
<b>Chambers</b>	<b>Ralph</b>	<b>11 Sep 2001</b>	<b>15 Sep 2001</b>		<b>F-4-16</b>	<b>1</b>	<b>Heart disease</b>
<b>Sorenson</b>	<b>Arden</b>	<b>21 Mar 2002</b>	<b>25 Mar 2002</b>	<b>1</b>	<b>C-8-4</b>	<b>1</b>	<b>Metastatic esophageal carcinoma</b>
<b>Schmidt</b>	<b>Elva</b>	<b>16 Aug 2002</b>			<b>H-1-10</b>	<b>1</b>	<b>Natural causes</b>
<b>Kemi</b>	<b>Eugene</b>	<b>19 Aug 2002</b>	<b>21 Aug 2002</b>	<b>1</b>	<b>G-6-8</b>	<b>1</b>	<b>Colon cancer</b>
<b>Norton</b>	<b>Mary</b>	<b>21 Aug 2002</b>	<b>24 Aug 2002</b>		<b>D-6-4</b>	<b>1</b>	<b>Congestive heart failure</b>
<b>Borchardt</b>	<b>Harry</b>	<b>29 Mar 2003</b>	<b>Spring 2003</b>		<b>D-1-1</b>	<b>1</b>	<b>Coronary artery disease</b>
<b>McLain</b>	<b>Randy</b>	<b>17 Apr 2003</b>	<b>5 May 2003</b>	<b>1</b>	<b>H-4-11</b>	<b>1</b>	<b>Auto accident - blunt force head injuries</b>
<b>Johnson</b>	<b>Walter</b>	<b>14 May 2003</b>	<b>17 May 2003</b>		<b>F-5-3</b>	<b>1</b>	<b>Brain tumor</b>
<b>Bradford</b>	<b>Matthew</b>	<b>11 Aug 2003</b>	<b>16 Aug 2003</b>		<b>H-2-1</b>	<b>1</b>	<b>Auto accident - multiple trauma</b>
<b>Chambers</b>	<b>Lowell</b>	<b>23 Oct 2003</b>			<b>F-6-12</b>	<b>1</b>	<b>Hypertensive cardiovascular disease</b>
<b>Groth Wolfram</b>	<b>Hilda</b>	<b>14 Jan 2004</b>	<b>17 Jan 2004</b>		<b>F-6-3</b>	<b>1</b>	<b>Congestive heart failure</b>
<b>Chambers</b>	<b>Linda</b>	<b>27 Jan 2004</b>	<b>30 Jan 2004</b>		<b>F-4-13</b>	<b>1</b>	<b>Cardiac arrest</b>

**Lakeview Cemetery - burial date, veterans, grave location, tombstone found, and cause of death - sorted by DOD**

<b>Last Name</b>	<b>First</b>	<b>DOD</b>	<b>Burial Date</b>	<b>Veteran</b>	<b>Grave Location</b>	<b>Tombstone Found</b>	<b>Cause of Death</b>
<b>Goranson</b>	<b>William</b>	<b>23 May 2004</b>	<b>30 May 2004</b>		<b>D-1-3</b>	<b>1</b>	
<b>Kirzy</b>	<b>Raymond</b>	<b>24 Jul 2004</b>	<b>30 Jul 2004</b>	<b>1</b>	<b>F-4-1</b>	<b>1</b>	<b>Chronic congestive heart failure</b>
<b>Burdick</b>	<b>Joseph</b>	<b>11 Sep 2004</b>			<b>F-4-21</b>	<b>1</b>	
<b>Pettit</b>	<b>Lilja</b>	<b>24 Oct 2004</b>	<b>30 Oct 2004</b>		<b>G-5-16</b>	<b>1</b>	<b>Cancer</b>
<b>Louison</b>	<b>Norman</b>	<b>1 Mar 2005</b>	<b>3 Mar 2005</b>		<b>E-2-2</b>	<b>1</b>	<b>Lung cancer</b>
<b>Johnson</b>	<b>Paul</b>	<b>22 May 2005</b>	<b>28 May 2005</b>		<b>D-7-4</b>	<b>1</b>	<b>Colon cancer</b>
<b>Pettit</b>	<b>Helvie</b>	<b>20 Jul 2005</b>			<b>G-5-15</b>	<b>1</b>	<b>Malignant fibrous histiocytoma</b>
<b>Lowry</b>	<b>Eunice</b>	<b>24 Jul 2005</b>	<b>29 Jul 2005</b>		<b>E-3-1</b>	<b>1</b>	<b>Coronary artery disease</b>
<b>Pettit</b>	<b>Ruth</b>	<b>22 Aug 2005</b>	<b>10 Sep 2005</b>		<b>H-3-2</b>	<b>1</b>	<b>Dementia</b>
<b>Kumm</b>	<b>Larry</b>	<b>15 Sep 2005</b>	<b>18 Sep 2005</b>	<b>1</b>	<b>F-4-6</b>	<b>1</b>	<b>Cancer</b>
<b>Sjogren</b>	<b>Joan</b>	<b>7 Jul 2006</b>	<b>14 Jul 2006</b>		<b>D-4-3</b>	<b>1</b>	<b>Congestive heart failure</b>
<b>Chambers</b>	<b>Richard</b>	<b>11 Oct 2006</b>		<b>1</b>	<b>C-7-3</b>	<b>1</b>	<b>Lung cancer</b>
<b>Anderson</b>	<b>Herbert</b>	<b>25 Nov 2006</b>	<b>29 Nov 2006</b>		<b>H-2-13</b>	<b>1</b>	<b>Leukemia</b>

**Lakeview Cemetery - burial date, veterans, grave location, tombstone found, and cause of death - sorted by DOD**

<b>Last Name</b>	<b>First</b>	<b>DOD</b>	<b>Burial Date</b>	<b>Veteran</b>	<b>Grave Location</b>	<b>Tombstone Found</b>	<b>Cause of Death</b>
<b>McMillan</b>	<b>Patricia</b>	<b>28 Mar 2007</b>	<b>10 Apr 2007</b>		<b>G-5-3</b>	<b>1</b>	<b>Lung cancer</b>
<b>Olsen</b>	<b>Ruby</b>	<b>16 Apr 2007</b>	<b>19 Apr 2007</b>		<b>D-8-4</b>	<b>1</b>	<b>Cerebral hemorrhage</b>
<b>Hart</b>	<b>Lyle</b>	<b>13 Sep 2007</b>	<b>15 Sep 2007</b>		<b>H-1-3</b>	<b>1</b>	<b>Lung cancer</b>
<b>Crotteau</b>	<b>Harold</b>	<b>3 Nov 2007</b>	<b>7 Nov 2007</b>	<b>1</b>	<b>A-7-3</b>	<b>1</b>	<b>Cardiac arrest</b>
<b>Hart</b>	<b>Nina</b>	<b>5 Feb 2008</b>	<b>9 Feb 2008</b>		<b>H-1-4</b>	<b>1</b>	<b>Cor pulmonale (failure of right side of heart)</b>
<b>Hotchkiss</b>	<b>Richard</b>	<b>10 Feb 2008</b>	<b>12 Feb 2008</b>	<b>1</b>	<b>C-1-0</b>	<b>1</b>	<b>Lung cancer</b>
<b>Graff</b>	<b>Mae</b>	<b>10 Feb 2008</b>	<b>16 Feb 2008</b>		<b>H-3-16</b>	<b>1</b>	<b>Leukemia</b>
<b>Oja</b>	<b>Henry</b>	<b>15 Oct 2008</b>		<b>1</b>	<b>H-5-15</b>	<b>1</b>	<b>Glioblastoma multiforme (brain cancer)</b>
<b>Kumm</b>	<b>Glenn</b>	<b>14 Mar 2009</b>	<b>20 Mar 2009</b>	<b>1</b>	<b>F-4-5</b>	<b>1</b>	<b>Aspiration pneumonia</b>
<b>Stenson Campion</b>	<b>Carol</b>	<b>19 May 2009</b>	<b>27 May 2009</b>		<b>A-1-2</b>	<b>1</b>	<b>Cancer</b>
<b>Maruski</b>	<b>Mae</b>	<b>11 Jun 2010</b>	<b>13 Jul 2010</b>		<b>D-2-2</b>	<b>1</b>	<b>Sepsis</b>
<b>Anderson</b>	<b>George</b>	<b>21 Dec 2010</b>	<b>27 Dec 2010</b>		<b>D-3-1</b>	<b>1</b>	<b>Multiple myeloma</b>
<b>Kisler</b>	<b>George</b>	<b>1 Jan 2011</b>			<b>H-3-4</b>	<b>1</b>	<b>Urosepsis</b>

**Lakeview Cemetery - burial date, veterans, grave location, tombstone found, and cause of death - sorted by DOD**

<b>Last Name</b>	<b>First</b>	<b>DOD</b>	<b>Burial Date</b>	<b>Veteran</b>	<b>Grave Location</b>	<b>Tombstone Found</b>	<b>Cause of Death</b>
<b>Niesen</b>	<b>Margaret</b>	<b>22 Mar 2011</b>			<b>G-5-19</b>	<b>1</b>	<b>Renal failure</b>
<b>Bradford</b>	<b>Gerald</b>	<b>9 Sep 2011</b>		<b>1</b>	<b>G-1-7</b>	<b>1</b>	<b>Acute stroke</b>
<b>Brozek</b>	<b>Nancy</b>	<b>22 Nov 2011</b>			<b>D-4-1</b>	<b>1</b>	<b>Cirrhosis</b>
<b>Sarvela</b>	<b>Karen</b>	<b>26 Jan 2012</b>			<b>C-2-2</b>	<b>1</b>	<b>Non Hodgkin's lymphoma</b>
<b>Stenson</b>	<b>Edith</b>	<b>1 Apr 2012</b>	<b>4 Apr 2012</b>		<b>A-1-4</b>	<b>1</b>	<b>Congestive heart failure</b>
<b>Witz</b>	<b>Vergene</b>	<b>5 Jul 2012</b>	<b>12 Jul 2012</b>		<b>F-7-9</b>	<b>1</b>	<b>Cardiomyopathy</b>
<b>Hotchkiss</b>	<b>Betty</b>	<b>23 Jul 2012</b>			<b>C-1-0</b>	<b>1</b>	<b>Diabetes</b>
<b>Jolliffe</b>	<b>Kathryn</b>	<b>9 Dec 2013</b>	<b>13 Dec 2013</b>		<b>F-1-1</b>	<b>1</b>	<b>ESRD - kidney disease</b>
<b>Bradford</b>	<b>Gail</b>	<b>6 Feb 2015</b>			<b>G-1-15</b>	<b>1</b>	<b>Breast cancer</b>
<b>Johnson</b>	<b>Thelma</b>	<b>5 Apr 2015</b>	<b>10 Apr 2015</b>		<b>F-5-4</b>	<b>1</b>	<b>Ischemic stroke</b>
<b>Groth</b>	<b>Dorothy</b>	<b>30 Sep 2015</b>			<b>A-2-3</b>	<b>1</b>	<b>Stroke</b>
<b>Gillette</b>	<b>Linda</b>	<b>18 Oct 2015</b>			<b>H-3-9</b>	<b>1</b>	<b>Respiratory failure</b>
<b>Gillette</b>	<b>Jon</b>	<b>11 Mar 2016</b>	<b>19 Mar 2016</b>	<b>1</b>	<b>H-3-9</b>	<b>1</b>	<b>Cancer</b>

**Lakeview Cemetery - burial date, veterans, grave location, tombstone found, and cause of death - sorted by DOD**

<b>Last Name</b>	<b>First</b>	<b>DOD</b>	<b>Burial Date</b>	<b>Veteran</b>	<b>Grave Location</b>	<b>Tombstone Found</b>	<b>Cause of Death</b>
<b>Jauss</b>	<b>Arthur</b>	<b>13 Aug 2016</b>	<b>20 Aug 2016</b>	<b>1</b>	<b>H-2-7</b>	<b>1</b>	<b>Natural causes</b>
<b>Radtke</b>	<b>Eva</b>	<b>26 Jan 2017</b>	<b>24 Jun 2017</b>		<b>D-3-4</b>		
<b>366</b>				<b>45</b>		<b>324</b>	

Lakeview Cemetery - birth and death details								
Last Name	First	DOB	Birth Location	DOD	Cremation	Death Place	Birth Certificate #	Death Certificate #
Albright	Anna	2 Jan 1913	Wright, Carlton, MN	29 Feb 1960		Cloquet, Carlton, MN	1913-3867	1960-1949
Albright	John	11 Oct 1866	Germany	3 Feb 1944		Moose Lake, Carlton, MN		1944-1726
Albright	Manuel	5 Aug 1905	Carlton county, MN	26 Jan 1969		Cloquet, Carlton, MN	1905-2948	1969-3137
Albright	Margaret	3 May 1887	Bergen, Norway	20 Oct 1967		Sandstone, Pine, MN		1967-25717
Albright	Willie	21 Oct 1903	Carlton county, MN	20 Jun 1993		Carlton, Carlton, MN	1903-2849	1993-15045
Amundson	Andrew	22 Sep 1868	Houston, Houston, MN	14 May 1946		Cloquet, Carlton, MN		1946-1765
Amundson	Hilda	18 Jan 1903	Edmore, Ramsey, ND	15 Dec 1983		Midway township, St. Louis, MN		1983-33365
Amundson	Julia	21 Sep 1870	Norway	25 Jun 1954		Cloquet, Carlton, MN		1954-1726
Amundson	Palmer	16 Jul 1905	Aitkin county, MN	5 Apr 1972		Aitkin, Aitkin, MN	1905-3	1972-8923
Anderson	Anna	15 Jul 1860	Carver county, MN	29 Sep 1920		Wright, Carlton, MN		1920-1893
Anderson	Charles	3 Sep 1854	Ostergotland, Sweden	19 Aug 1945		Wright, Carlton, MN		1945-1894
Anderson	Evert	1 Sep 1914	Carlton county, MN	28 Nov 1960		Aitkin county, MN	1914-3746	1960-89
Anderson	George	9 Apr 1923	Ogden, Weber, Utah	21 Dec 2010		Carlton, Carlton, MN		2010-37814
Anderson	Herbert	9 Feb 1949	Carlton county, MN	25 Nov 2006	C	Duluth, St. Louis, MN	1949-61357	2006-32943
Anderson	Olga	17 Jul 1886	Sweden	17 Dec 1976		Carlton, Carlton, MN		1976-30218
Anderson	Oscar	14 Mar 1886	Sweden	20 Jan 1966		Cloquet, Carlton, MN		1966-175
Anderson	Richard	17 Nov 1943	Carlton county, MN	1 Sep 1968		Germany	1943-37200	
Anderson	Rose	22 Jun 1909	Wright, Carlton, MN	10 Mar 2000		Duluth, St. Louis, MN	1909-3155	2000-7905
Behrens	Baby Boy	22 Feb 1904	Carlton county, MN	22 Feb 1904		Lakeview township, Carlton, MN	1904-2960	1904-32-1187
Behrens	Gertie	22 May 1900	Carlton county, MN	9 Mar 1901		Lakeview, Carlton, MN	1900-2674	
Berg	Bonsak	15 Jun 1863	Leksvik, Norway	11 Oct 1932		Haugen township, Aitkin, MN		1932-48
Berg	Hilda	29 Jan 1862	Akershus fylke, Norway	21 Oct 1951		Minneapolis, Hennepin, MN		1951-23177
Bergstrom	Loretta	24 Apr 1910	Dakota county, MN	6 Feb 1936		Wadena county, MN	1910-6126	1936-17524
Bern	Mary	13 Apr 1880	Finland	18 Dec 1934		Lakeview township, Carlton, MN		1934-1878

Lakeview Cemetery - birth and death details								
Last Name	First	DOB	Birth Location	DOD	Cremation	Death Place	Birth Certificate #	Death Certificate #
Bern	William	4 Oct 1880	Sweden	10 Nov 1940		Lakeview township, Carlton, MN		1940-1870
Beseman	Emilie	30 Jan 1863	Germany	12 May 1935		Beseman township, Carlton, MN		1935-1766
Beseman	Ernest	24 Aug 1858	Germany	5 Jan 1927		Beseman township, Carlton, MN		1927-1741
Beseman	Fred	19 Sep 1893	Chaska, Carver, MN	27 Oct 1963		Big Fork, Itasca, MN		1963-8957
Beseman	Peter	4 Oct 1885	Chaska, Carver county, MN	12 Oct 1951		Cloquet, Carlton, MN		1951-1742
Borchardt	Elvie	2 Dec 1917	Wright, Carlton, MN	7 Oct 1984		Duluth, St. Louis county, MN		1984-27104
Borchardt	Harry	3 Jun 1917	Watertown, Jefferson, WI	29 Mar 2003		Cloquet, Carlton, MN		2003-10755
Bradford	Barry	18 Apr 1959	Carlton county, MN	2 Mar 1983		Red Clover township, Carlton, MN	1959-80352	1983-5915
Bradford	Forrest	3 Jul 1909	Barron, Barron, WI	22 Jul 1971		Moose Lake, Carlton, MN		1971-17180
Bradford	Gail	30 Jul 1932	Duluth, St. Louis, MN	6 Feb 2015		Mission Ridge, Billings, MT	1932-47107	
Bradford	Gerald	2 Aug 1934	Cloquet, Carlton, MN	9 Sep 2011	C	Cloquet, Carlton, MN	1934-3706	2011-618483
Bradford	Gordon	25 Aug 1931	Haliaday, Dunn, ND	4 Jan 1993		Billings, Yellowstone, MT		
Bradford	Jack	2 Nov 1935	Wright, Carlton, MN	2 Nov 1935		Wright, Carlton, MN	1935-21790	1935-1943
Bradford	Julia	17 Jul 1910	Aitkin, Aitkin, MN	7 Apr 1999	C	Duluth, St. Louis county, MN	1910-50	1999-12897
Bradford	Matthew	28 Jun 1985	Carlton county, MN	11 Aug 2003	C	Moose Lake, Carlton, MN	1985-33560	2003-26454
Bradford	Ruth	10 Jan 1936	Cloquet, Carlton, MN	3 Mar 1960		Cloquet, Carlton, MN	1936-13586	1960-1950
Brozek	Nancy	28 Sep 1956	International Falls, Koochiching, MN	22 Nov 2011		St. Louis Park, Hennepin, MN	1956-21742	2011-626709
Buetow	Henry	26 Nov 1901	Carver county, MN	3 Mar 1980		Wright, Carlton, MN	1901-3004	1980-5800
Buetow	Mathilda	7 May 1872	Germany	28 Apr 1944		Beseman township, Carlton, MN		1944-1616
Buetow, Sr	Henry	27 Mar 1862	Germany	22 Oct 1939		Beseman township, Carlton, MN		1939-1735
Burdick	Darrell	3 Nov 1932	MN	17 Dec 1932		Cromwell, Carlton, MN		
Burdick	Joseph	29 Aug 1908	MN	11 Sep 2004		Solon, Johnson, IA		
Burdick	Olga	23 Jun 1910	Wisconsin	12 Jun 1961		Tucson, Pima, AZ		AZ #1961-5277
Bushey	Fred	26 Nov 1889	Huntingdon, Quebec, Canada	3 Feb 1952		St. Louis county, MN		1952-28236

Lakeview Cemetery - birth and death details								
Last Name	First	DOB	Birth Location	DOD	Cremation	Death Place	Birth Certificate #	Death Certificate #
Bushey	Geraldine	6 Dec 1927	Carlton county, MN	1 Jul 1946		Dayton, Montgomery, OH	1927-4231	
Bushey	Mildred	1 Mar 1901	Hitterdal, Clay, MN	22 May 1976		Cloquet, Carlton, MN	1901-4324	1976-11604
Bushey	Paul	28 Mar 1886	Ontario, Canada	12 Oct 1953		Wright, Carlton, MN		1953-2148
Cann	Rose	23 Aug 1900	Sanborn, Redwood, MN	18 Nov 1982		Duluth, St. Louis county, MN		1982-29437
Chambers	Alonzo	24 Jan 1867	Grant county, WI	9 Aug 1933		Moose Lake, Carlton, MN		1933-1874
Chambers	Baby	2 Mar 1939	Carlton county, MN	3 Mar 1939		Wright, Carlton, MN	1939-30997	1939-1970
Chambers	Charles	9 Aug 1895	Lake Park, Dickinson, IA	11 Dec 1917		Camp Cody, Luna, New Mexico		
Chambers	Ida	5 Nov 1874	Atlantic, Cass, IA	11 Mar 1953		Iowa City, Johnson, IA		
Chambers	James	17 Dec 1940	Aitkin, Aitkin county, MN	4 Oct 1992		Cloquet, Carlton, MN	1940-22009	1992-28499
Chambers	Linda	6 Dec 1945	Cloquet, Carlton, MN	27 Jan 2004	C	Duluth, St. Louis, MN	1945-5868	2004-2439
Chambers	Lowell	11 Oct 1919	Carlton county, MN	23 Oct 2003	C	Wright, Carlton, MN	1919-3926	2003-33553
Chambers	Ralph	11 Sep 1916	Tamarack, Aitkin, MN	11 Sep 2001		Cloquet, Carlton, MN	1916-79	2001-524738
Chambers	Richard	10 Jun 1944	Duluth, St. Louis, MN	11 Oct 2006		Moose Lake, Carlton, MN	1944-45597	2006-28317
Chambers	Ruth	29 Aug 1916	Tribune, Saskatchewan, Canada	25 Jun 1991		Duluth, St. Louis county, MN		1991-16567
Chambers	Steven	31 May 1945	Duluth, St. Louis county, MN	7 Jul 1946		St. Louis county, MN	1945-29682	1946-28326
Cherpas	Frank	abt 1872	Lithuania	29 Nov 1937		Cloquet, Carlton, MN		1937-1769
Ciskie	Lillian	18 Nov 1919	Wright, Carlton, MN	10 May 1920		Beseman township, Carlton, MN	1919-3700	1920-1740
Comstock	Donald	5 Feb 1943	Lakeview township, Carlton, MN	17 Oct 1943		Red Clover township, Carlton, MN	1943-37232	1943-2008
Crotteau	Harold	5 Mar 1923	Cloquet, Carlton, MN	3 Nov 2007	C	Cloquet, Carlton, MN	1923-4087	2007-30760
Crotteau	Justine	7 Sep 1927	Montana	15 Jun 1990		Duluth, St. Louis, MN		1990-19232
Dahlman	Emil	22 Mar 1887	WI	27 Jan 1956		Duluth,, St. Louis county, MN		1956-29778
Dallmann	Augusta	17 Sep 1857	Germany	13 Nov 1935		Lakeview township, Carlton, MN		1935-1877
Dallmann	Henry	12 Feb 1850	Germany	15 Dec 1928		Lakeview township, Carlton, MN		1928-1805
Dam	Ida	27 Feb 1908	Aitkin county, MN	12 Jan 1995		Midway township, St. Louis, MN	1908-118	1995-2581



Lakeview Cemetery - birth and death details								
Last Name	First	DOB	Birth Location	DOD	Cremation	Death Place	Birth Certificate #	Death Certificate #
Dam	Nels	9 Feb 1894	Denmark	16 Mar 1978		Cloquet, Carlton, MN		1978-5747
Dam, Jr.	Nels	13 Aug 1932	McGregor, Aitkin, MN	28 Feb 1986		Midway township, St. Louis, MN	1932-205	1986-16691
Deremo	Josephine	29 Nov 1913	Aitkin county, MN	14 Jul 1915		Haugen township, Aitkin, MN	1913-110	1915-48
Ellis	Roger	11 Aug 1935	Carlton county, MN	16 Aug 1935		Wright, Carlton, MN	1935-21788	1935-1942
Fenton	Bruce	26 Aug 1933	Carlton county, MN	31 Jul 1938		Cloquet, Carlton, MN	1933-3643	1938-1758
Fenton	Charles	23 Feb 1872	Meadville, Crawford, PA	22 Jun 1961		Cloquet, Carlton, MN		1961-1973
Fenton	Lyman	28 Jan 1836	New York	10 Dec 1917		Lakeview, Carlton, MN		1917-1743
Fenton	Mary	20 Feb 1876	Beldenville, Pierce, WI	12 Aug 1964		Sandstone, Pine county, MN		1964-15225
Forgerson	Bertha	16 Jun 1870	Dakota county, MN	17 Sep 1967		Carlton, Carlton, MN		1967-22014
Forgerson	George	10 Jan 1865	IL	28 Dec 1947		Beseman township, Carlton, MN		1947-1681
Fraley	Lura	30 Apr 1924	Carlton county, MN	4 Feb 1925		Wright, Carlton, MN	1924-4318	1925-1938
Gilbertson	Cena	19 Apr 1904	MI	3 Dec 1923		St. Louis county, MN		1923-27034
Gilden	Jennie	15 Sep 1907	Crow Wing county, MN	4 Sep 1952		Clark township, Aitkin, MN	1907-5744	1952-41
Gillette	Jon	29 Nov 1943	Cloquet, Carlton, MN	11 Mar 2016	C	McGregor, Aitkin, MN	1943-37209	2016-8623
Gillette	Linda	5 Jan 1949	Carlton county, MN	18 Oct 2015	C	Aitkin, Aitkin, MN	1949-72385	2015-38546
Gisler	Frank	20 Mar 1903	Peoria, IL	23 Nov 1975		Cloquet, Carlton, MN		1975-27498
Gisler	Lela	25 Nov 1909	Bremer county, IA	12 Aug 1974		St. Louis county, MN		1974-22193
Goranson	Albert	11 Dec 1920	Beseman township, Carlton, MN	12 May 1923		Beseman township, Carlton, MN	1920-4206	1923-1725
Goranson	George	25 Sep 1886	Sweden	5 Jul 1960		Cloquet, Carlton, MN		1960-1992
Goranson	Gilbert	26 Nov 1919	Carlton county, MN	8 Sep 1987	C	Cloquet, Carlton, MN	1919-3702	1987-22515
Goranson	Helga	6 Jul 1889	Bergan, Norway	18 Apr 1955		Lakeview township, Carlton, MN		1955-1836
Goranson	Theodore	15 Nov 1924	Carlton county, MN	23 May 1980		Cloquet, Carlton, MN	1924-3898	1980-11533
Goranson	William	23 May 2004	MN	23 May 2004		MN		
Gowdy	Clara	12 Jan 1865	Bangor, Penobscot, ME	14 Jun 1919		Lakeview township, Carlton, MN		1919-1790

Lakeview Cemetery - birth and death details								
Last Name	First	DOB	Birth Location	DOD	Cremation	Death Place	Birth Certificate #	Death Certificate #
Gowdy	Mary Ann	12 Apr 1862	Ohio	23 Jan 1925		Wright, Carlton, MN		1925-1937
Gowdy	Willard	10 Mar 1861	New York	21 Jul 1930		Wright, Carlton, MN		1930-1893
Graff	Gilmore	25 Dec 1910	St. Louis county, MN	26 Oct 1933		Fort Francis, Canada	1910-25484	
Graff	Ida	29 Apr 1881	Germany	5 Sep 1947		St. Louis county, MN		1947-14683
Graff	Lewis	11 Nov 1876	Blue Earth county, MN	27 Apr 1947		Cloquet, Carlton, MN		1947-1721
Graff	Mae	20 Sep 1922	Carlton county, MN	10 Feb 2008		McGregor, Aitkin, MN	1922-4409	2008-4533
Graff	Walter	28 Sep 1909	St. Louis county, MN	26 Dec 1986		Cloquet, Carlton, MN	1909-25641	1986-34645
Groth	Amy	9 Dec 1901	Duluth, St. Louis, MN	3 Oct 1963		Fargo, Cass, ND	1901-37440	
Groth	Augusta	13 Oct 1887	Augusta, Carver, MN	31 Dec 1962		Cloquet, Carlton, MN		1962-2062
Groth	Augusta	4 Aug 1860	Schlavine, Germany	3 Aug 1929		Wright, Carlton, MN		1929-1905
Groth	Carl	18 Oct 1897	Cologne, Carver, MN	4 Apr 1983		Los Angeles, CA		
Groth	Dorothy	20 Jun 1920	McGregor, Aitkin, MN	30 Sep 2015		Cromwell, Carlton, MN	1920-415	2015-36135
Groth	Duane	23 Mar 1948	Carlton county, MN	21 Apr 1973		Beseman township, Carlton, MN	1948-30382	1973-8893
Groth	Elcey	29 Jun 1901	Cologne, Carver, MN	19 Apr 1971		Aitkin, Aitkin county, MN	1901-3070	1971-8305
Groth	Elvira	24 Jan 1895	Grant county, MN	16 Nov 1975		Oak Ridge, Anderson, TN		
Groth	Ernest	28 Apr 1895	Cologne, Carver, MN	2 Apr 1955		Oak Ridge, Anderson, TN		TN 55-6959
Groth	Ferdinand	9 Aug 1825	Germany	23 May 1912		Beseman township, Carlton, MN		1912-1429
Groth	Frederick	21 Oct 1850	Germany	12 Aug 1916		Lakeview township, Carlton, MN		1916-1824
Groth	Gerald	2 Jul 1928	Carlton county, MN	30 Nov 1984		Mora, Kanabec, MN	1928-3716	1984-28979
Groth	Grace	14 Jun 1909	Tamarack, Aitkin, MN	16 Aug 1991		Cromwell, Carlton, MN	1909-76	1991-22823
Groth	Henry	12 Dec 1880	Waconia, Carver, MN	26 Oct 1937		Wright, Carlton, MN		1937-1876
Groth	Karleen	22 Mar 1941	Duluth, St. Louis county, MN	4 Jul 1942		Moorhead, Clay county, MN	1941-40014	1942-2665
Groth	Marlene	19 May 1936	Eaton county, MI	9 May 1998		Washington county, Oregon		OR DC#98-10461
Groth	Neal	8 Aug 1933	Carlton county, MN	7 Mar 1989		Duluth, St. Louis county, MN	1933-3633	1989-8017

Lakeview Cemetery - birth and death details								
Last Name	First	DOB	Birth Location	DOD	Cremation	Death Place	Birth Certificate #	Death Certificate #
Groth	Oscar	4 Mar 1907	Cologne, Carver county, MN	28 Jan 1969		Cloquet, Carlton, MN	1907-3445	1969-3138
Groth	Russell	23 Mar 1918	Wright Carlton, MN	10 Sep 1992		Cloquet, Carlton, MN	1918-4377	1992-22698
Groth	Sophia	17 Nov 1882	New Germany, MN	22 Nov 1924		St. Paul, Ramsey, MN		1924-24854
Groth	Wesley	12 Apr 1922	Wright, Carlton, MN	16 Apr 1922		Wright, Carlton, MN	1922-4683	1922-1800
Groth	William	8 Nov 1935	St. Louis county, MN	22 Nov 1938		Duluth, St. Louis county, MN	1935-45970	1938-27284
Groth Wolfram	Hilda	9 Jun 1903	Superior, Douglas, WI	14 Jan 2004		Cloquet, Carlton, MN		2004-837
Guitare	Agnes	17 Aug 1880	Solon Springs, Douglas, Wi	10 Mar 1957		Carlton, Carlton, MN		1957-1942
Guitare	David	13 Feb 1951	Duluth, St. Louis, MN	14 Feb 1951		Duluth, St. Louis, MN	1951-41574	1951-28303
Guitare	John	1 Sep 1880	Canada	2 Apr 1952		Cloquet, Carlton, MN		1952-1696
Gustafson	Edith	21 Feb 1905	Aitkin, Aitkin, MN	7 May 1992		Grand Rapids, Itasca, MN	1905-36	1992-12650
Gustafson	Eleanor	14 Oct 1923	Aitkin county, MN	7 Jan 1936		Minneapolis, Hennepin, MN	1923-284	1936-19234
Gustafson	Signe	21 Oct 1883	Sweden	2 Nov 1963		Aitkin, Aitkin county, MN		1963-98
Gustafson	Vernon	30 Jul 1927	Palisade, Aitkin county, MN	29 Apr 1961		Aitkin, Aitkin county, MN	1927-191	1961-66
Gustafson	Walter	18 Jan 1902	St. Louis county, MN	27 Sep 1970		Duluth, St. Louis county, MN		1970-27851
Hamren	Kenneth	17 Aug 1928	Aitkin, Aitkin, MN	19 May 1971		Beseman township, Carlton, MN	1928-62	1971-1139
Hamren	Lorraine	25 Jan 1925	Tamarack, Aitkin, MN	2 Apr 1987		Duluth, St. Louis, MN	1925-109	1987-10807
Harp	Ada	15 Oct 1883	Monroe county, WI	12 Mar 1984		Cromwell, Carlton, MN		1984-5447
Harp	Hazel	26 Dec 1915	Otter Tail county, MN	24 Jun 1970		Duluth, St. Louis, MN	1915-23908	1970-19624
Harp	Jacquelyn	7 Jun 1935	Cloquet, Carlton, MN	14 Jun 1943		Duluth, St. Louis county, MN	1935-21466	1943-27864
Harp	Leone	13 Jan 1930	Wright, Carlton, MN	2 Oct 1934		Cloquet, Carlton, MN	1930-3958	1934-1819
Harp	Lloyd	13 Feb 1910	Carlton county, MN	10 Nov 1981		Superior, Douglas county, WI	1910-3064	
Harp	Lyman	18 Feb 1884	Kirby, Monroe county, WI	23 Sep 1955		Beseman township, Carlton, MN		1955-1720
Harp	Marlys	23 Jan 1938	Wright, Carlton, MN	11 Jan 1948		Wright, Carlton, MN	1938-2534	1918-2046
Hart	Clarence	21 Aug 1896	Stockholm, Wright, MN	26 Aug 1983		Cromwell, Carlton, MN		1983-22688

Lakeview Cemetery - birth and death details								
Last Name	First	DOB	Birth Location	DOD	Cremation	Death Place	Birth Certificate #	Death Certificate #
Hart	Hazel	30 Jul 1904	St. Louis county, MN	23 Sep 1989		St. Louis county, MN	1904-24531	1989-27117
Hart	Lyle	5 Aug 1928	St. Louis county, MN	13 Sep 2007		Cromwell, Carlton, MN	1928-27039	2007-25411
Hart	Neil	16 May 1933	Cloquet, Carlton, MN	17 Sep 1935		Prairie Lake township, St. Louis, MN	1933-3589	1935-14206
Hart	Nina	12 Oct 1929	Dickey county, ND	5 Feb 2008		Cromwell, Carlton, MN		2008-3870
Hart	Wesley	6 Aug 1958	Carlton county, MN	14 Apr 1978		Roosevelt Rds., Puerto Rico	1958-22721	
Hotchkiss	Betty	15 Mar 1934	Terre Haute, Vigo, IN	23 Jul 2012	C	Hermantown, St. Louis, MN		2012-21800
Hotchkiss	Frank	26 Sep 1887	Vernon Center, Blue Earth, MN	30 Jul 1966		Coeur d'Alene, Kootenal, ID		
Hotchkiss	Frank	8 Jun 1914	Otter Tail county, MN	1 Jan 1989		Cloquet, Carlton, MN	1914-22499	1989-193
Hotchkiss	Helen	21 Jun 1893	MN	20 Sep 1970		Coeur d'Alene, Kootenal, ID		
Hotchkiss	Martha	3 Mar 1922	Beseman township, Carlton, MN	30 Aug 1997		Cloquet, Carlton, MN	1922-4178	1997-25223
Hotchkiss	Richard	13 Oct 1928	Ashby, Grant, MN	10 Feb 2008	C	Duluth, St. Louis, MN	1928-21677	2008-4251
Hugdahl	Carl	30 Apr 1921	Michigan	9 Jan 1986	C	Cloquet, Carlton, MN		1986-196
Hugdahl	Carol	12 Jan 1935	Wright, Carlton, MN	1 Jan 1992		Cromwell, Carlton, MN	1935-35325	1992-204
Jauss	Arthur	2 Feb 1918	St. Paul, Ramsey, MN	13 Aug 2016		Duluth, St. Louis, MN	1918-50214	2016-26281
Jauss	Bernice	9 Oct 1918	Iron River, Bayfield, WI	18 Sep 1995		Carlton, Carlton, MN		1995-24200
Johlfs	Baby	3 May 1933	Cromwell, Carlton, MN	4 May 1933		Cromwell, Carlton MN	1933-3713	1933-1825
Johlfs	Ileen	30 Dec 1929	Cromwell, Carlton, MN	2 Jan 1930		Cromwell, Carlton, MN	1929-3578	1930-1771
Johnson	Adolf	16 May 1896	Virginia, St. Louis, MN	8 Dec 1937		Prairie Lake township, St. Louis, MN		1937-14468
Johnson	Baby Boy	7 Oct 1917	McGregor, Aitkin, MN	7 Oct 1917		McGregor, Aitkin, MN	1917-203	1917-66
Johnson	Carl	15 Dec 1858	Sweden	4 Oct 1929		Prairie Lake township, Carlton, MN		1929-14057
Johnson	Della	11 Apr 1899	Newton township, Jasper, IN	21 Mar 1985		Aitkin, Aitkin county, MN		1985-5803
Johnson	Edna	1 Oct 1902	Hennepin county, MN	14 Feb 1976		Cloquet, Carlton, MN	1902-32707	1976-2736
Johnson	Emelia	9 Aug 1898	Montpelier, Washington, VT	9 Sep 1967		Coon Rapids, Anoka county, MN		1967-21873
Johnson	Gustave	18 Nov 1886	Des Moines, IA	21 Nov 1988		Aitkin, Aitkin county, MN		1988-28962

Lakeview Cemetery - birth and death details								
Last Name	First	DOB	Birth Location	DOD	Cremation	Death Place	Birth Certificate #	Death Certificate #
Johnson	Henry	14 Jul 1910	Minneapolis, Hennepin, MN	20 Sep 1983		Cloquet, Carlton, MN		1983-22708
Johnson	Ida	3 Oct 1866	Kronoberg, Sweden	8 Sep 1928		Duluth, St. Louis, MN		1928-27105
Johnson	Ida	22 Mar 1875	Norway	31 May 1949		Staples, Todd, MN		1949-16641
Johnson	John	29 Dec 1861	Halland, Sweden	6 Dec 1934		Haugen township, Aitkin, MN		1934-47
Johnson	John	13 Oct 1873	Darlane, Sweden	5 Oct 1964		Cloquet, Carlton, MN		1964-2287
Johnson	Kathrina	Oct 1854	Sweden	4 Mar 1907		Haugen township, Aitkin, MN		1907-51A-1820
Johnson	Nels	Oct 1884	Iowa	1918				
Johnson	Nels	16 Jul 1852	Starby Parish, Kristianstad, Sweden	5 Oct 1944		Brainerd, Crow Wing, MN		1944-3105
Johnson	Paul	9 Feb 1943	St. Paul, Ramsey county, MN	22 May 2005		Moose Lake, Carlton, MN	1943-45545	2005-16084
Johnson	Peter	14 Jul 1890	Sweden	15 Apr 1960		Cloquet, Carlton, MN		1960-1966
Johnson	Thelma	29 Mar 1921	Rosholt, Roberts, SD	5 Apr 2015		Moose Lake, Carlton, MN		2015-11544
Johnson	Walter	16 Oct 1898	MN	3 Aug 1973		Coon Rapids, Anoka, MN		1973-19837
Johnson	Walter	17 Dec 1919	St. Croix Falls, Polk, WI	14 May 2003		Cromwell, Carlton, MN		2003-16539
Jolliffe	Kathryn	1 Dec 1941	Aitkin county, MN	9 Dec 2013		Duluth, St. Louis, MN	1941-11200	2013-38317
Kajander	Anna	22 Aug 1881	Carlton county, MN	15 Jan 1905		Lakeview township, Carlton, MN		1905-39-573
Kemi	Eugene	11 Apr 1920	Cloquet, Carlton, MN	19 Aug 2002		Cloquet, Carlton, MN	1920-4286	2002-27746
Kemi	Laverne	13 Dec 1931	Wright, Carlton, MN	23 Mar 2001		Cloquet, Carlton, MN	1931-3603	2001-508155
Kirzy	Agnes	2 Apr 1894	Germany	20 Dec 1964		Beseman township, Carlton, MN		1964-2367
Kirzy	Joseph	15 Sep 1885	Lithuania	25 Mar 1986		Beseman township, Carlton, MN		1986-5992
Kirzy	Raymond	13 Nov 1919	Wright, Carlton, MN	24 Jul 2004	C	Wright, Carlton, MN		2004-20779
Kisler	George	4 Nov 1936	Wright, Carlton, MN	1 Jan 2011		Robbinsdale, Hennepin, MN	1936-13958	2011-230
Kisler	Jennie	28 Aug 1896	Rosemount, MN	8 Oct 1964		Cloquet, Carlton, MN		1964-2292
Kisler	Lowell	24 Apr 1898	MN	19 Oct 1980		Cloquet, Carlton, MN		1980-24950
Kisler	Nancy	20 May 1941	Cloquet, Carlton, MN	27 Jun 1996		Coon Rapids, Anoka, MN	1941-13606	1996-18053

Lakeview Cemetery - birth and death details								
Last Name	First	DOB	Birth Location	DOD	Cremation	Death Place	Birth Certificate #	Death Certificate #
Kumm	Glenn	5 Nov 1921	San Jose, California	14 Mar 2009	C	Duluth, St. Louis, MN		2009-8001
Kumm	Jesse	28 Aug 1888	Bellingham, Lac qui Parle, MN	20 May 1967		Springfield, Brown county, MN		1967-11093
Kumm	Larry	17 Nov 1953	Carlton county, MN	15 Sep 2005		Carlton county, MN	1953-32751	2005-26444
Kumm	Margaret	29 Mar 1894	Montana	22 Oct 1976		Cambridge, Isanti, MN		1976-25234
Ladeen	Sammy	6 Sep 1922	Duluth, St. Louis, MN	12 Jun 1937		Lakeview township, Carlton, MN	1922-58867	1937-1805
Larson	Kate	1 Jan 1873	WI	6 Nov 1919		Wright, Carlton, MN		1919-1793
LeBlue	Calma	18 Sep 1898	Grafton, ND	21 Nov 1962		St. Louis county, MN		1962-33304
Long	Henry	28 Nov 1870	Starke county, IN	12 Mar 1957		Moose Lake, Carlton, MN		1957-2099
Long	Richard	16 Dec 1886	English Lake, Starke county, IN	24 Oct 1945		Cle Elum, Kittitas, Washington		
Louison	Clara	1 Oct 1882	Waupaca, WI	31 Aug 1950		Wright, Carlton, MN		1950-2077
Louison	Clarence	17 Mar 1909	Plainview, Hale, Texas	18 Apr 1940		Moose Lake, Carlton, MN	TX 1900	1940-1912
Louison	Norman	30 Jan 1914	Canada	1 Mar 2005	C	Duluth, St. Louis, MN		2005-6418
Lowe	Florence	4 Feb 1909	Los Angeles county, CA	25 Nov 1918		Lakeview township, Carlton, MN		1918-2330
Lowe	George	2 May 1869	Hixton, Jackson, WI	8 May 1930		Haugen township, Aitkin, MN		1930-35
Lowe	Olga	7 Apr 1912	San Gabriel, Los Angeles, CA	24 Nov 1918		Lakeview township, Carlton, MN		1918-2329
Lowe	Walter	20 Jul 1916	Aitkin county, MN	24 Nov 1918		Wright, Carlton, MN	1916-121	1918-2328
Lowe Wendt	Olga	26 Aug 1882	Norway	23 Jul 1975		Brainerd, Crow Wing, MN		1975-16822
Lowry	Eunice	11 Oct 1908	Libby, Aitkin county, MN	24 Jul 2005		Duluth, St. Louis, MN	1908-165	2005-21490
Lowry	Martha	1 Aug 1881	Canada	2 Mar 1977		Kissimmee, Osceola, Florida		
Lowry	Thomas	28 Oct 1875	Canada	3 Aug 1949		Crow Wing county, MN		1949-3169
Lowry	William	28 Sep 1902	Duluth, St. Louis, MN	16 Mar 1967		Cloquet, Carlton, MN	1902-39581	1967-5657
Lubben	Thomas	12 Jan 1871	Hanover, Germany	2 Apr 1947		Wright, Carlton, MN		1947-2006
Lubben Schlive	Della	15 Sep 1880	Terre Haute, Vigo, IN	7 Sep 1965		Cloquet, Carlton, MN		1965-24402
Madden	Thomas	25 Aug 1896	Pine City, Pine, MN	29 Jun 1943		St. Louis county, MN		1943-13982

Lakeview Cemetery - birth and death details								
Last Name	First	DOB	Birth Location	DOD	Cremation	Death Place	Birth Certificate #	Death Certificate #
Malmsten	Kristina	1 Jan 1858	Sweden	23 May 1932		Minneapolis, Hennepin, MN		1932-19384
Maruski	Andrew	20 Jul 1905	Oglesby, LaSalle, IL	24 Dec 1996		Cloquet, Carlton, MN		1996-33125
Maruski	Frances	22 Jan 1910	Nelson, Douglas, MN	26 Feb 1944		Beseman township, Carlton, MN	1910-6810	1944-1615
Maruski	George	21 Oct 1913	MN	29 Dec 1992		Cloquet, Carlton, MN		1992-34509
Maruski	Mae	1 May 1918	Duluth, St. Louis, MN	11 Jun 2010	C	Cromwell, Carlton, MN	1918-55991	2010-20032
McLain	Gertrude	27 Jan 1903	Sweden	11 Feb 1975		Coon Rapids, Anoka county, MN		1975-5494
McLain	Randy	17 Jul 1955	Minneapolis, Hennepin, MN	17 Apr 2003		Hassan township, Hennepin, MN	1955-50184	2003-14827
McLain	Walter	3 Jul 1895	Duluth, St. Louis, MN	25 Oct 1971		Midway township, St. Louis, MN		1971-26845
McMillan	Edward	9 Aug 1872	Tyrone, Blair, PA	3 Oct 1946		Moose Lake, Carlton, MN		1946-1938
McMillan	Esther	1 Oct 1937	Carlton county, MN	25 Dec 1937		Beseman township, Carlton, MN	1937-47048	1937-1680
McMillan	Flora	3 Jan 1908	Missouri	23 Jun 1977		Crosby, Crow Wing county, MN		1977-13534
McMillan	Harold	15 Mar 1900	Altoona, Blair, PA	12 May 1990		Moose Lake, Carlton, MN		1990-11674
McMillan	Margaret	3 Aug 1881	Bellwood, Blair, PA	15 Sep 1960		Cloquet, Carlton, MN		1960-2013
McMillan	Patricia	26 Dec 1940	Milwaukee, WI	28 Mar 2007	C	Cloquet, Carlton, MN		2007-9754
McMillan	Steve	19 Sep 1939	Wright, Carlton, MN	10 Oct 1995	C	Strawberry, Gila, AZ		
Minor	Nellie	6 Jun 1885	Sarcoxie, Jasper, Missouri	27 Jul 1954		Beseman township, Carlton, MN		1954-1684
Moen	Fred	22 Jul 1881	Norway	20 Feb 1958		St. Louis county, MN		1958-15507
Moen	Marie	17 Nov 1881	Norway	26 Feb 1975		Carlton, Carlton, MN		1975-3161
Morrison	Peter	16 Mar 1850	Canada	23 Sep 1914		Lakeview township, Carlton, MN		1914-1853
Navakas	Josephine	13 Feb 1910	Cherry, Bureau, IL	3 Jul 1935		Lakeview township, Carlton, MN		1935-1876
Neubauer	Christine	13 Feb 1879	Hitterdal, Clay, MN	21 Sep 1953		Chicago, Cook, IL		
Newstrom	Albert	2 Jan 1876	Smaland, Sweden	23 Dec 1965		Aitkin, Aitkin county, MN		1965-32818
Newstrom	Marie	6 May 1883	Langesund, Norway	31 Oct 1965		Aitkin county, MN		1965-24240
Nickoloff	Martin	5 Jun 1894	Bulgaria	2 Oct 1955		Beseman township, Carlton, MN		1955-1721

Lakeview Cemetery - birth and death details								
Last Name	First	DOB	Birth Location	DOD	Cremation	Death Place	Birth Certificate #	Death Certificate #
Niesen	Lawrence	26 Apr 1915	Milaca, Mille Lacs county, MN	24 Sep 1974		Cloquet, Carlton, MN	1915-19276	1974-22452
Niesen	Margaret	12 Dec 1920	Anton, Douglas, WI	22 Mar 2011		Cloquet, Carlton, MN		2011-600355
Niesen	Robert	11 Nov 1941	Eagle township, Carlton, MN	25 Nov 1941		Eagle township, Carlton, MN	1941-55729	1941-1972
Nordquist	Annie	3 Apr 1872	Sweden	5 Nov 1956		Cloquet, Carlton, MN		1956-1842
Nordquist	August	8 Mar 1864	Sweden	29 Mar 1946		Cloquet, Carlton, MN		1946-1759
Nordquist	John	5 Apr 1899	Cloquet, Carlton, MN	3 Jun 1965		Cloquet, Carlton, MN		1965-13705
Nordquist	Lawrence	20 Sep 1910	Wright, Carlton, MN	5 Apr 1950		Wright, Carlton, MN	1910-3377	1950-2075
Nordquist	Martha	9 Jan 1896	Hector, Renville, MN	7 Mar 1989		Canon City, Fremont, Colorado		
Norton	Edwin	23 Feb 1905	Wright, Carlton, MN	4 Apr 1972		Duluth, St. Louis county, MN	1905-3234	1972-14222
Norton	John	9 Aug 1863	Sweden	14 Dec 1912		Beseman township, Carlton, MN		1913-1599
Norton	Josephine	15 Oct 1911	Carlton county, MN	23 Oct 1911		Beseman township, Carlton, MN	1911-3216	1911-1533
Norton	Lester	28 Mar 1907	Carlton county, MN	1 Apr 1974		St. Louis county, MN	1907-3203	1974-13877
Norton	Marie	21 Apr 1885	Norway	8 Sep 1972		St. Louis county, MN		1972-25485
Norton	Mary	19 Mar 1913	St. Paul, Ramsey, MN	21 Aug 2002		Duluth, St. Louis, MN		2002-28035
Norton	Wilfred	18 Apr 1910	Carlton county, MN	21 Sep 1974		Duluth, St. Louis county, MN	1910-3065	1974-25063
Nosteby	Ella	3 Dec 1893	Emerson, Dixon, NE	13 Aug 1972		Aitkin county, MN		1972-19902
Nosteby	Gullik	30 Jan 1877	Uvdal, Norway	30 Sep 1966		Aitkin, Aitkin, MN		1966-22463
Oja	Henry	5 Jan 1926	Aitkin county, MN	15 Oct 2008	C	Wright, Carlton, MN	1926-100	2008-30219
Oja	Maxine	2 Nov 1928	Ramsey county, MN	5 Jun 2000		Duluth, St. Louis county, MN	1928-48079	2000-16946
Olsen	Hanne	7 Sep 1851	Norway	3 Sep 1929		Wright, Carlton, MN		1929-1906
Olsen	Mons	23 Jun 1858	Bergen, Norway	4 Apr 1935		Beseman township, Carlton, MN		1935-1765
Olsen	Ruby	26 Apr 1918	Winner, Tripp, SD	16 Apr 2007	C	Aitkin, Aitkin, MN		2007-10975
Olson	Ben	14 Dec 1915	Haugen township, Aitkin, MN	8 Jan 1916		Haugen township, Aitkin, MN	1915-116	1916-31
Ostlund	Lars	31 May 1846	Sweden	21 Dec 1914		Wright, Carlton, MN		1914-1854



Lakeview Cemetery - birth and death details								
Last Name	First	DOB	Birth Location	DOD	Cremation	Death Place	Birth Certificate #	Death Certificate #
Otten	Anna	22 Aug 1901	MN	29 Jan 1963		Cloquet, Carlton, MN		1963-1869
Otten	Beecke	18 Oct 1857	Germany	14 Aug 1920		Beseman township, Carlton, MN		1920-1741
Otten	Calvin	4 Nov 1934	Lakeview township, Carlton, MN	11 Nov 1934		Lakeview township, Carlton, MN	1934-3891	1934-1876
Otten	Etta	21 Jun 1900	Nobles county, MN	5 Nov 1974		Ah-gwah-ching, Cass county, MN	1900-16325	1974-28100
Otten	Frances	11 May 1917	Carlton county, MN	11 Nov 1917		Beseman township, Carlton, MN	1917-3945	1917-1669
Otten	George	26 May 1922	Wright, Carlton, MN	31 Dec 1996	C	Wright, Carlton, MN	1922-4464	1996-37173
Otten	Henry	21 Feb 1891	Crescent City, Iroquois, IL	6 Dec 1966		Moose Lake, Carlton, MN		1966-28144
Otten	John	2 Feb 1895	Crescent City, Iroquois, IL	25 Dec 1972		Cloquet, Carlton, MN		1972-31646
Otten	John	18 Nov 1926	Wright, Carlton, MN	23 Feb 1927		Wright, Carlton, MN	1926-4187	1927-1925
Otten	Jorgan	5 Nov 1853	Germany	7 Oct 1939		Duluth, St. Louis county, MN		1939-27722
Otten	Lucille	2 Aug 1917	Wrenshall, Carlton, MN	25 Sep 1917		Beseman township, Carlton, MN	1917-4322	1917-1668
Otten	Myra	28 Feb 1924	Wright, Carlton, MN	5 Dec 1934		Lakeview township, Carlton, MN	1924-4428	1934-1877
Otten	William	7 Apr 1900	Crescent City, Iroquois, IL	1940-1950		Superior, WI		
Paukert	Dorothy	4 Oct 1918	Watertown, Codington, SD	11 Aug 1991		Moose Lake, Carlton, MN		1991-19995
Pence	Charles	14 Jun 1864	Kentland, Newton, IN	5 Jul 1942		Haugen township, Aitkin, MN		1942-43
Pence	Effie	15 Oct 1869	IN	15 Jun 1963		Hennepin county, MN		1963-6807
Peterson	Anna	9 Oct 1860	Sweden	17 Dec 1937		Beseman township, Carlton, MN		1937-1679
Peterson	Carl	3 Jan 1900	Sweden	27 Apr 1983		Carlton, Carlton, MN		1983-11561
Peterson	Ellen	26 Apr 1898	Sweden	22 Mar 1988		Cloquet, Carlton, MN		1988-6266
Peterson	Emil	4 Jan 1908	Cromwell, Carlton, MN	7 Jan 1980		Cloquet, Carlton, MN		1980-165
Peterson	John	25 Feb 1865	Sweden	28 Jun 1951		Cloquet, Carlton, MN		1951-1725
Peterson	Klarice	27 May 1913	St. Louis county, MN	24 Oct 1963		Duluth, St. Louis, MN	1913-28758	1963-34105
Peterson	Robert	29 Apr 1873	Goteborg, Sweden	6 Jan 1933		Cloquet, Carlton, MN		1933-1761
Pettit	Alfred	19 Jun 1918	Wright, Carlton, MN	11 Feb 1984		St. Louis county, MN	1918-4147	1984-4860

Lakeview Cemetery - birth and death details								
Last Name	First	DOB	Birth Location	DOD	Cremation	Death Place	Birth Certificate #	Death Certificate #
Pettit	Arthur	19 Jul 1913	Beltrami county, MN	25 May 1994		St. Louis county, MN	1913-1466	1994-17204
Pettit	Baby	31 Jul 1934	Beseman township, Carlton, MN	31 Jul 1934		Beseman township, Carlton, MN	1934-3579	
Pettit	Cleveland	30 Nov 1886	Little Falls, Morrison, MN	7 Feb 1950		Superior, Douglas, WI		
Pettit	Darrell	4 Jan 1955	Carlton county, MN	7 Nov 1974		Lakeview township, Carlton, MN	1955-40700	1974-28059
Pettit	Helvie	1 Nov 1926	Sawyer township, Carlton, MN	20 Jul 2005		Duluth, St. Louis, MN	1926-4113	2005-21202
Pettit	Lawrence	4 Dec 1915	Wright, Carlton, MN	28 May 1993	C	Cloquet, Carlton, MN	1915-4359	1993-15030
Pettit	Lilja	1 Sep 1918	Lakeview township, Carlton, MN	24 Oct 2004		Wright, Carlton, MN	1918-4383	2004-29583
Pettit	Rena	2 Apr 1893	Worthington, Nobles, MN	19 Aug 1942		Superior, Douglas, WI		
Pettit	Ruth	11 Nov 1918	Bellingham, Lac Qui Parle, MN	22 Aug 2005	C	Carlton, Carlton, MN	1918-15529	2005-24290
Pettit	Terry	19 Apr 1948	Superior, Douglas, WI	21 Aug 1950		Duluth, St. Louis county, MN		1950-29175
Pino	Fred	11 Jun 1902	Pine City, Pine, MN	25 Aug 1992		Cass county, MN	1902-18873	1992-22726
Pino	Hazel	17 May 1906	Grantsburg, Burnett, WI	22 Apr 1999		Cromwell, Carlton, MN		1999-10453
Pless	Michael	28 Aug 1880	Germany	22 Jan 1950		Haugen township, Aitkin, MN		1950-54
Pomplun	Barbara	8 Jun 1939	Tamarack, Aitkin county, MN	12 Apr 1956		Duluth, St. Louis county, MN	1939-26738	1956-30075
Pomplun	Bertha	24 Nov 1910	Ellendale, ND	21 May 1982		Cloquet, Carlton, MN		1982-11003
Pomplun	Charles	21 Nov 1907	MN	28 Jan 1972		Cloquet, Carlton, MN		1972-229
Pomplun	Karen	1 Dec 1941	Aitkin county, MN	24 Aug 1946		Faribault, Rice county, MN	1941-11199	1946-13517
Pracht	Ferdinand	18 Apr 1850	Germany	11 Feb 1936		Minneapolis, Hennepin, MN		1936-19857
Pracht	Henry	11 Jun 1889	Chaska, Carver, MN	7 Sep 1967		Minneapolis, Hennepin, MN		1967-23767
Pracht	Maria	14 Mar 1895	Pocahontas county, IA	21 Mar 1951		Lakeview township, Carlton, MN		1951-1787
Pracht	Matthilda	22 Nov 1865	Carver county, MN	16 May 1927		Wright, Carlton, MN		1927-1926
Pracht	Viola	18 Aug 1916	Canada	22 Dec 2000	C	Carlton, Carlton, MN		2000-35893
Rack	Ernest	14 Jan 1881	Rostock, Germany	2 Feb 1953		Tulsa, Oklahoma		
Radtke	Eva	12 Aug 1927	Cloquet, Carlton, MN	26 Jan 2017	C	Canon City, Fremont, CO	1927-3922	

Lakeview Cemetery - birth and death details								
Last Name	First	DOB	Birth Location	DOD	Cremation	Death Place	Birth Certificate #	Death Certificate #
Reed	Arthur	17 Apr 1902	Superior, Douglas, WI	1 May 1919		Beseman township, Carlton, MN		1919-1702
Reutter	Venita	28 Jul 1910	Kossuth county, IA	6 Jul 1926		Red Clover township, Carlton, MN		1926-1881
Reynolds	Laurence	7 Mar 1905	ND	4 Nov 1937		Minneapolis, Hennepin, MN		1937-22788
Ricker	Anna	29 Apr 1847	Sweden	13 Dec 1943		Brainerd, Crow Wing county, MN		1943-3238
Sanvig	Corrine	11 Mar 1933	Duluth, St. Louis, MN	10 Jul 1971		Cloquet, Carlton, MN	1933-44426	1971-17171
Sanvig	Selmar	12 Nov 1926	Glenwood, Pope, MN	13 May 1993		Duluth, St. Louis county, MN	1926-24308	1993-14372
Sarvela	Franklin	20 Nov 1935	Carlton county, MN	4 Oct 1969		Spring Lake Park, Anoka, MN	1935-21594	1969-25084
Sarvela	Karen	15 Feb 1939	Carlton county, MN	26 Jan 2012	C	Fridley, Anoka, MN	1939-5077	2012-2729
Schake	Arvilla	6 Aug 1937	St. Louis county, MN	25 Jan 1938		Duluth, St. Louis, MN	1937-19351	1938-26277
Schake	Clarence	7 May 1898	Nashua, Chickasaw, IA	19 Aug 1991		Cloquet, Carlton, MN		1991-19999
Schake	Margaret	17 Oct 1900	Missouri	10 Feb 1965		Cloquet, Carlton, MN		1965-2761
Schake	Walter	14 Jun 1945	Cloquet, Carlton, MN	14 Jun 1945		Knife Falls township, Carlton, MN	1945-55296	1945-1695
Schliep	Louise	2 Apr 1870	Germany	23 Mar 1925		Deerwood, Crow Wing, MN		1925-3182
Schlive	William	28 Oct 1880	Germany	24 Aug 1960		Cloquet, Carlton, MN		1960-2007
Schmidt	Andres	29 Oct 1887	Germany	23 Feb 1977		Aitkin, Aitkin, MN		1977-2592
Schmidt	Elva	27 Nov 1907	Austin, Mower, MN	16 Aug 2002		Aitkin, Aitkin, MN		2002-29296
Schmidt	John	4 Jan 1910	Wright, Carlton, MN	23 Feb 1910		Lakeview township, Carlton, MN	1910-3369	1910-1656
Sears	Raymond	11 Mar 1920	Wright, Carlton, MN	17 Mar 1920		Wright, Carlton, MN	1920-4668	1920-1892
Sjogren	Anna	27 Jul 1882	Sweden	2 Jan 1978		Duluth, St. Louis county, MN		1978-2625
Sjogren	Joan	4 Mar 1907	Chicago, Cook, IL	7 Jul 2006		Cromwell, Carlton, MN		2006-19516
Sjogren	Nancy	20 May 1931	Chicago, Cook, IL	25 Sep 1943		Duluth St. Louis county, MN		1943-28231
Sjogren	Nels	25 Sep 1910	Wright, Carlton, MN	15 Apr 1966		St. Louis county, MN	DC-6066	1966-11208
Sjogren	Oscar	25 Sep 1916	Carlton county, MN	30 Jan 1978		Beseman township, Carlton, MN	1916-4301	1978-186
Sjogren	Paul	29 Apr 1857	Sweden	24 Apr 1945		Beseman township, Carlton, MN		1945-1611

Lakeview Cemetery - birth and death details								
Last Name	First	DOB	Birth Location	DOD	Cremation	Death Place	Birth Certificate #	Death Certificate #
Sjogren	Paul	3 Aug 1913	MN	20 Feb 1980		Minneapolis, Hennepin, MN		1980-3401
Sjogren	Pauline	2 Nov 1909	Red Wing, Goodhue, MN	26 Jan 1997		Duluth, St. Louis, MN		1997-3119
Skarland	George	17 Aug 1892	Mayer, Carver county, MN	8 Jun 1973		Cloquet, Carlton, MN		1973-14471
Skarland	Minnie	20 Jan 1889	Carver county, MN	4 Oct 1959		Benton township, Carver, MN		1959-2314
Sorenson	Arden	12 May 1950	Appleton, Swift, MN	21 Mar 2002		Cromwell, Carlton, MN	1950-5858	2002-9220
Sorenson	Merlyn	10 Jul 1943	Appleton, Swift county, MN	15 Dec 1967		Milwaukee, WI	1943-1054	
Sorenson	Ronald	22 May 1936	Madison, Lac Qui Parle, MN	11 Mar 1991		Wright, Carlton, MN	1936-20520	1991-5485
Spicer	Clara	2 Aug 1856	Albion, Erie, PA	10 Jun 1942		Wright, Carlton, MN		1942-1885
Spicer	David	7 Apr 1848	PA	15 Apr 1925		Beseman township, Carlton, MN		1925-1781
Spicer	Jennie	2 Dec 1876	Albion, Erie, PA	23 May 1958		Cloquet, Carlton, MN		1958-1949
Stenson	Carl	30 Aug 1875	Sweden	27 Nov 1960		Wright, Carlton, MN		1960-2246
Stenson	Edith	7 Aug 1921	Keewatin, Itasca county, MN	1 Apr 2012	C	Duluth, St. Louis, MN	DC-31690	2012-9882
Stenson	John	26 Nov 1923	Carlton county, MN	27 Sep 1970		Duluth, St. Louis county, MN	1923-4484	1970-27852
Stenson	Julia	20 Apr 1890	MN	6 May 1966		Coon Rapids, Anoka, MN		1966-11287
Stenson	Leroy	17 Mar 1917	Lakeview township, Carlton, MN	4 Feb 1918		Lakeview township, Carlton, MN	1917-4241	1918-2325
Stenson	Lorraine	9 Dec 1924	Minneapolis, Hennepin, MN	15 Nov 1989		Moose Lake, Carlton, MN	1924-48203	1989-27933
Stenson	Vernon	10 Sep 1913	MN	13 Jul 1974		St. Louis county, MN	1913-36235	1974-19558
Stenson	Walter	14 Apr 1921	Carlton county, MN	5 May 1998		Duluth, St. Louis county, MN	1921-4670	1998-14904
Stenson	Carol	2 Jul 1930	Duluth, St. Louis, MN	19 May 2009	C	Baxter, Crow Wing, MN	1930-47953	2009-14927
Tarr	Ora	26 Mar 1901	Red Oak, Montgomery, IA	19 May 1939		Cloquet, Carlton, MN		1939-1778
Toole	Ruth	2 Apr 1906	Goodhue county, MN	25 Jun 1973		Duluth, St. Louis county, MN	1906-8723	1973-16960
Versto	Sverming	29 Jun 1859	Norway	2 Apr 1923		Wright, Carlton, MN		1923-1905
Versto	Victor	27 Jun 1902	Delavan, Faribault county, MN	18 Dec 1925		Wright, Carlton, MN	1902-6949	1925-1939
Wahl	Herman	9 Mar 1880	Poland	17 Jun 1952		Haugen township, Aitkin, MN		1952-49

Lakeview Cemetery - birth and death details

Last Name	First	DOB	Birth Location	DOD	Cremation	Death Place	Birth Certificate #	Death Certificate #
<b>Waller</b>	<b>Ida</b>	<b>14 May 1916</b>	<b>MN</b>	<b>19 Apr 1917</b>		<b>Lakeview township, Carlton, MN</b>		<b>1917-1742</b>
<b>Whitten</b>	<b>Harold</b>	<b>15 Jul 1884</b>	<b>Malone, Franklin, NY</b>	<b>4 May 1948</b>		<b>Brainerd, Crow Wing, MN</b>		<b>1948-3206</b>
<b>Whitten</b>	<b>May</b>	<b>20 Jun 1891</b>	<b>Rosemount, Dakota, MN</b>	<b>3 Jul 1961</b>		<b>Pine River, Cass, MN</b>		<b>1961-2402</b>
<b>Wickstrand</b>	<b>John</b>	<b>8 Mar 1879</b>	<b>Jho, Sweden</b>	<b>1 Nov 1971</b>		<b>Superior, Douglas, WI</b>		
<b>Witz</b>	<b>Vergene</b>	<b>11 Sep 1927</b>	<b>Carlton county, MN</b>	<b>5 Jul 2012</b>	<b>C</b>	<b>Barnum, Carlton, MN</b>	<b>1927-3785</b>	<b>2012-19911</b>
<b>Zirbel</b>	<b>Clarence</b>	<b>16 Nov 1950</b>	<b>Harvey, Wells, ND</b>	<b>7 Nov 1960</b>		<b>Wright, Carlton, MN</b>		<b>1960-2245</b>

# Driveway

4 Fred Moen 3 Marie Moen 2 Klarice Peterson 1 Emil Peterson	4 Henry Long 3 John A. Johnson 2 Henry Johnson 1 Edna Johnson	4 John Guitare 3 Agnes Guitare 2 Ella Nosteby 1 Gullik Nosteby	4 Fred Bushey 3 Fred Bushey 2 Mildred Bushey 1 Christine Neubauer	4 Terry Pettit 3 Peter Johnson 2 Anna Otten 1 John Otten	4 Thomas Lowry 3 Martha Lowry 2 William Lowry 1 Eunice Lowry	4 Clara Louison 3 Emil Dahlman 2 Norman Louison 1	4 Anna Albright 3 Manuel Albright 2 Oscar Anderson 1 Olga Anderson	E
4 Ruby Olsen 3 Ronald Sorenson 2 1 Merlyn Sorenson	4 Paul Johnson 3 2 1	4 Mary Norton 3 Edwin Norton 2 1	4 3 2 1	4 Nels Sjogren 3 Joan Sjogren 2 Ruth Toole 1 Nancy Brozek	4 Eva Radtke 4 John Nordquist 3 Martha Nordquist 2 1 George Anderson	5 Inez Anderson 4 Evert Anderson 3 Richard Anderson 2 Mae Maruski 1 George Maruski	4 Clarence Zirbel 3 William Goranson 2 Elvie Borchardt 1 Harry Borchardt	D
4 Arden Sorenson 3 2 1	4 Richard Chambers 3 2 1	4 3 2 1	4 3 2 1	4 Lela Gisler 3 Frank Gisler 2 1	4 Margaret Kumm 3 Jesse Kumm 2 Walter McLain 1 Gertrude McLain	5 Etta Otten 4 Henry Otten 3 Franklin Sarvela 2 Karen Sarvela 1	4 Frank Hotchkiss 3 Helen Hotchkiss 2 Frank Hotchkiss 1 Martha Hotchkiss Richard/Betty Hotchkiss	C
4 3 2 1	4 3 2 1	4 3 2 1	4 3 2 1	4 3 2 1	4 3 2 1	4 Corrine Sanvig 3 Selmar Sanvig 2 1	4 Emelia Johnson 3 Walter Johnson 2 Lorraine Stenson 1 Walter Stenson	B
5 Carl Hugdahl 5 Carol Hugdahl 4 Clarence Schake 3 Margaret Schake 2 Arvilla Schake 1 Walter Schake	4 Harold Crotteau 3 Harold Crotteau 2 Justine Crotteau 1 John Wickstrand	4 3 2 1	4 3 2 1	4 3 2 1	4 3 2 1	4 Russell Groth 3 Dorothy Groth 2 1 Duane Groth	4 Edith Stenson 3 Vernon Stenson 2 Carol Stenson 1 John Stenson	A



## Lakeview Cemetery - Wright, Minnesota

GWP  
24 May 2017



16 Herman Wahl 15 Ernest Rack 14 Paul Sjogren 12 Anna Sjogren 11 Oscar Sjogren 10 Paul Sjogren 9 Nancy Sjogren	8 Lawrence Nordquist 7 Annie Nordquist 6 August Nordquist 5 Pauline Sjogren 4 3 Francies Maruski 2 Andrew Maruski 1	16 Lloyd Harp 14 Hazel Harp 13 Marlys Harp 12 Jacquelyn Harp 11 10 9	8 Eugene Kemi 7 Lavern Kemi 6 Sammy Ladeen 5 Nels Johnson 4 3 N. Johnson 2 Katrina Johnson 1	23 22 21 Lawrence Reynolds 20	19 Margaret Niesen 18 Robert Niesen 17 Frank Cherpas 16 Lawrence/Lilja Pettit 15 Helvie Pettit 14 Alfred Pettit	13 Nellie Minor 12 Margaret McMillan 11 Edward McMillan 10 9 Cleveland Pettit 8 Rena Pettit 7 Baby Pettit	6 Flora McMillan 5 Esther McMillan 4 Harold McMillan 3 Patricia/Steven McMillan 2 Ida C. Johnson 1 John Johnson 0 Anna Kajander	16 Signe Gustafson 14 Edith Gustafson 13 Walter Gustafson 12 Vernon Gustafson 11 Eleanor Gustafson 10 Gertie/Baby Behrens 9 Harold Whitten 8 May Whitten 7 6 Lowell Kisler 5 Roger Ellis 4 Jennie Kisler 3 Bertha Forgerson 2 George Forgerson 1 Loretta Bergstrom	15 Gail Bradford 14 Gordon Bradford 13 Ruth Bradford 12 Jack Bradford 11 Julia Bradford 10 Forrest Bradford 9 Barry Bradford 8 7 Gerald Bradford 6 Victor Versto 5 Sverming Versto 4 David Guitare 3 Raymond Sears 2 Venita Reutter 1 Thomas Lubben
10 Richard Long 9 Michael Pless 8 7 William Bern 6 Marie Bern	5 4 3 2 1	24 23 22 21 Augusta Groth 20 Elcey Groth 19 Augusta Groth 18 Frederick Groth 17 Ferdinand Groth	16 Anna Anderson 15 Charles Anderson 14 13 12 Julia Stenson 11 Oscar Stenson 10 Leroy Stenson	9 Walter Lowe 8 Olga Lowe 7 Florence Lowe 6 George Lowe 5 4 3 Olga Lowe Wendt 2 Fred Beseman 1 Josephine Navakas	33 Darrell Pettit 32 31 30 Wilfred Norton 29 Josephine Norton 28 John Norton 27 Marie Norton 26 Lester Norton 25 Anna Ricker	24 23 22 Albert Goranson 21 Helga Goranson 20 George Goranson 19 18 Gilbert Goranson 17 Neil Hart 16			

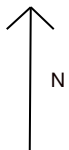
## Driveway

14 Gilmore Graff 13 Thomas Madden 12 Lewis Graff 11 Ida Graff 10 Rose Cann	9 Vergene Witz 8 Beecke Otten 7 Jorgen Otten 6 John Otten 5 William Otten	4 Lyman Fenton 3 Willard Gowdy 2 Clara Gowdy 1 Mary Ann Gowdy	15 Charles Chambers 14 Alonzo Chambers 13 Ida Chambers 12 Lowell Chambers 11 Baby Chambers	11 Gerald Groth 10 Wesley Groth 9 Elvira Groth 8 Ernest Groth 7 Grace Groth 6 Oscar Groth	5 Sophia Groth 4 Henry Groth 3 Hilda Groth Wolfram 2 1 Bruce Fenton	23 Cena Gilbertson 22 Charles Pence 21 Effie Pence 20 Margaret Albright 19 John Albright 18 Hanne Olsen 17 Mons Olsen 16 Bonsack Berg 15 Hilda Berg 14 Ida Dam 13 Nels Dam	12 11 David Spicer 10 Clara Spicer 9 Jennie Spicer 8 Robert Peterson 7 Della Johnson 6 Gustave Johnson 5 Thelma Johnson 4 Walter M. Johnson 3 2 1 Nels Dam, Jr	15 Kate Larson 14 Maria Pracht 13 Henry Pracht 12 Viola Pracht 11 Ferdinand Pracht 10 Mathilda Pracht 9 William Schlive 8 Delia Schlive 7 6 5 Karen Pomplun 4 Barbara Pomplun 3 Charles Pomplun 2 Bertha Pomplun 1 Kathryn Joliffe
34 Leone Harp 33 Lyman Harp 32 Louise Schliep 31 Ada Harp 30 William Groth 29 Karleen Groth 28 Amy Groth 27 Carl Groth 26 25 24	23 22 21 Joseph Burdick 20 Olga Burdick 19 Darrell Burdick 18 Steven Chambers 17 Ruth Chambers 16 Ralph Chambers 15 14 James Chambers 13 Linda Chambers 12	11 Emilie Beseman 10 Ernest Beseman 9 Peter Beseman 8 Jennie Gilden 7 Ora Tarr 6 Larry Kumm 5 Glenn Kumm 4 3 Agnes Kirzy 2 Joseph Kirzy 1 Raymond Kirzy	32 Henry Dallman 31 Augusta Dallman 30 Clarence Louison 29 Donald Comstock 28 Kristina Malmsten 27 Anna Peterson 26 John Peterson 25 Carl Peterson 24 Ellen Peterson 13	23 Henry Johnson 22 Ida/Carl Johnson 21 Minnie Skarland 20 George Skarland 19 18 Baby Jolifs 17 Ileen Jolifs 16 Marie Newstrom 15 Albert Newstrom 14 13	12 11 10 9 Mary Fenton 8 Charles Fenton 7 6 Henry Buetow, Sr 5 Mathilda Buetow 4 Henry Buetow 3 2 1	10 Andrew Amundson 9 Julia Amundson 8 Calma LeBlue 7 Palmer Amundson 6 Hilda Amundson	5 Geraldine Bushey 4 3 Paul Bushey 2 1	

# Lakeview Cemetery Wright, Minnesota

16	8	16	8 Fred Pino	16 Mae Graff	8 Kenneth Hamren	16	8 Bernice Jauss	11 Andres Schmidt
15 Henry Oja	7	15	7 Hazel Pino	15 Walter Graff	7 Lorraine Hamren	15 Theodore Goranson	7 Arthur Jauss	10 Elva Schmidt
14 Maxine Oja	6	14	6	14	6	14 Willie Albright	6	9
13	5	13	5	13	5	13 Rose Anderson Herbert Anderson	5	8
	5		4		3		2	1
12	4	12	4	12	4 George Kisler	12	4	6 Hazel Hart
11	3	11 Randy McLain	3	11	3 Nancy Kisler	11	3	5 Clarence Hart
10	2	10	2	10	2 Ruth Pettit	10	2	4 Nina Hart
9	1	9	1	9 Jon Gillette Linda Gillette	1 Arthur Pettit	9	1 Matthew Bradford	3 Lyle Hart
								2 Wesley Hart
								1

H



Parcel # 29-140-0320 - 1 acre  
COM AT PT ON SEC LINE 50 FT S OF NW COR OF SW1/4 SW1/4 TH S ON SEC LINE 264 FT TH E 165 FT TH N 264 FT TH W 165 FT TO BEG

GWP  
22 Apr 2017



# Plat of Lakeview Cemetery

## Wright, Minnesota



5	4	3	2	1	H
---	---	---	---	---	---

7	6	5		1	G
4	3	2			

7	6		5		1	F
4	3		2			

8	7	6	5	4	3	2	1	E
8	7	6	5	4	3	2	1	D
8	7	6	5	4	3	2	1	C
8	7	6	5	4	3	2	1	B
8	7	6	5	4	3	2	1	A

Lakeview Cemetery - spouse, parents and age						
Last Name	First	DOD	Spouse	Father	Mother	Age (Y,M,D)
Albright	Anna	29 Feb 1960	Manuel Albert Albright	Oscar N. Anderson	Olga Marie Nestor	47,1,27
Albright	John	3 Feb 1944	Margaret A. Olson	Anton Albright	Unknown	77,3,12
Albright	Manuel	26 Jan 1969	Anna Anderson	John Albright	Margaret Olsen	63,5,21
Albright	Margaret	20 Oct 1967	John Albright	Mons Olsen	Hanne Hendrickson	80,5,17
Albright	Willie	20 Jun 1993		John Albright	Margaret Olsen	89,7,30
Amundson	Andrew	14 May 1946	Julia Jore	Tov Amundson	Kari	77,7,22
Amundson	Hilda	15 Dec 1983		Andrew Amundson	Julia Jore	80,10,27
Amundson	Julia	25 Jun 1954	Andrew Amundson	Paul Jore		83,9,4
Amundson	Palmer	5 Apr 1972		Andrew Amundson	Julia Jore	66,8,20
Anderson	Anna	29 Sep 1920	Charles J. Anderson	Carl Stenberg	Marie Sophia Stanley	60,2,14
Anderson	Charles	19 Aug 1945	Anna C. Stenberg	Unknown		90,11,16
Anderson	Evert	28 Nov 1960	Inez Kumm	Oscar N. Anderson	Olga Marie Nestor	46,2,27
Anderson	George	21 Dec 2010	Ida Fern Zimmerman	Oscar N. Anderson	Olga Marie Nestor	87,8,12
Anderson	Herbert	25 Nov 2006		Oliver Neil Anderson	Rose Anna Albright	57,9,16
Anderson	Olga	17 Dec 1976	Oscar Anderson	August Nestor	Hilma Cesar	90,5,0
Anderson	Oscar	20 Jan 1966	Olga Nestor	Unknown		79,10,6
Anderson	Richard	1 Sep 1968		Evert Helge Anderson	Dorothy Inez Kumm	24,9,15
Anderson	Rose	10 Mar 2000	Oliver Neil Anderson	John Albright	Margaret Olsen	90,8,17
Behrens	Baby Boy	22 Feb 1904		Diedrich Behrens	Gertie Weatherlow	0
Behrens	Gertie	9 Mar 1901		Diedrich Behrens	Gertie Weatherlow	0,9,15
Berg	Bonsak	11 Oct 1932	Hilda Sofie Hansen	Oleverson Olesen	Martha Borsass	69,3,26
Berg	Hilda	21 Oct 1951	Bonsack Berg		Matilda Hansen	89,8,22
Bergstrom	Loretta	6 Feb 1936	Henning G. Bergstrom	George Forgerson	Bertha May Pemberton	25,9,12
Bern	Mary	18 Dec 1934	William Bern	Eastman		54,8,5
Bern	William	10 Nov 1940	Mary Eastman	P. G. Bern	Christina Palsen	60,1,6

Lakeview Cemetery - spouse, parents and age						
Last Name	First	DOD	Spouse	Father	Mother	Age (Y,M,D)
Beseman	Emilie	12 May 1935	Ernest Beseman	Johan Krueger	Alvine Hensel	72,3,12
Beseman	Ernest	5 Jan 1927	Emilie Marie Krueger	Peter Bergman	Sophia Marie Kusserow	68,4,12
Beseman	Fred	27 Oct 1963		Ernest Beseman	Emilie Krueger	70,1,8
Beseman	Peter	12 Oct 1951		Ernest Beseman	Emilie Krueger	66,0,8
Borchardt	Elvie	7 Oct 1984	Harry Borchardt	Roy Chambers	Grace Cyrus	66,10,5
Borchardt	Harry	29 Mar 2003	Bertha Sandison	Charles Borchardt	Adelia W. May	85,9,26
Bradford	Barry	2 Mar 1983		Gerald Lyle Bradford	Jeannette Tyyne Parviainen	23,10,12
Bradford	Forrest	22 Jul 1971	Julia Charlotte Wanous	Leaman Bradford	Myrtle Anna Collins	62,0,19
Bradford	Gail	6 Feb 2015	Gordon Bradford	Wallace Johnston	Sylvia Dorum	82,6,7
Bradford	Gerald	9 Sep 2011	Jeannette Tyyne Parviainen	Forrest E. Bradford	Julia Charlotte Wanous	77,1,7
Bradford	Gordon	4 Jan 1993	Gail Johnston	Forrest E. Bradford	Julia Charlotte Wanous	61,4,21
Bradford	Jack	2 Nov 1935		Forrest E. Bradford	Julia Charlotte Wanous	0
Bradford	Julia	7 Apr 1999	Forrest Bradford	William Wanous	Grace Mary Deming	88,8,21
Bradford	Matthew	11 Aug 2003		Richard Martin Bradford	Patricia Ann Barnes	18,1,14
Bradford	Ruth	3 Mar 1960	Gordon Bradford	Karl Kalli	Lyla Johnson	24,1,22
Brozek	Nancy	22 Nov 2011	Anthony Brozek	Donald Richard Sjogren	Joyce Lorraine Zak	55,1,25
Buetow	Henry	3 Mar 1980	Lillian Kircher	Henry Buetow	Mathilda Schadt	78,3,6
Buetow	Mathilda	28 Apr 1944	Henry Christ Buetow, Sr	August Schadt	Unknown	71,11,21
Buetow, Sr	Henry	22 Oct 1939	Mathilda Schadt	William Buetow	Christine Steinhuse	77,6,25
Burdick	Darrell	17 Dec 1932		Joseph Burdick	Olga Elvera Stone	0,1,14
Burdick	Joseph	11 Sep 2004	Olga Elvera Stone	Albert Reed Burdick	Mary Victoria Kleespies	96,0,13
Burdick	Olga	12 Jun 1961	Joseph Gordon Burdick	Alfred Stone, Sr.	Lena Moe	50,11,20
Bushey	Fred	3 Feb 1952	Mildred Odegaard	Frank Bushey	Celina Trepanier	62,2,8
Bushey	Geraldine	1 Jul 1946		Paul Bushey	Dolly Lowry	18,6,25
Bushey	Mildred	22 May 1976	Fred Bushey	Carl Odegaard	Christine Lyseng	75,2,21

Lakeview Cemetery - spouse, parents and age						
Last Name	First	DOD	Spouse	Father	Mother	Age (Y,M,D)
Bushey	Paul	12 Oct 1953	Dolly Elvina Lowry	Frank Bushey	Celina Trepanier	67,6,14
Cann	Rose	18 Nov 1982	Murray Cann	Thomas Madden	Julia Connor	82,2,26
Chambers	Alonzo	9 Aug 1933	Ida Durfee	David Chambers	Mary Soper	66,6,16
Chambers	Baby	3 Mar 1939		Ralph Oscar Chambers	Ruth Mildred Warne	0,0,1
Chambers	Charles	11 Dec 1917		Alonzo F. Chambers	Ida Mae Durfee	22,4,2
Chambers	Ida	11 Mar 1953	Alonzo Frederick Chambers	James L. Durfee	Olive B. Strong	78,4,6
Chambers	James	4 Oct 1992	Linda Larson	Ralph Oscar Chambers	Ruth Mildred Warne	51,9,17
Chambers	Linda	27 Jan 2004	James Chambers	Harry Bernard Larson	Grace Marie Reynolds	58,1,21
Chambers	Lowell	23 Oct 2003		Roy Chambers	Grace Cyrus	84,0,12
Chambers	Ralph	11 Sep 2001	Ruth Mildred Warne	Roy Chambers	Grace Cyrus	85,0,0
Chambers	Richard	11 Oct 2006	Carolyn Korpela	Ralph Oscar Chambers	Ruth Mildred Warne	62,4,1
Chambers	Ruth	25 Jun 1991	Ralph Oscar Chambers	William Warne	Nora Olson	74,9,27
Chambers	Steven	7 Jul 1946		Ralph Oscar Chambers	Ruth Mildred Warne	1,1,6
Cherpas	Frank	29 Nov 1937		Unknown		65
Ciskie	Lillian	10 May 1920		Joe Ciskie	Agnes Pettit	0,5,25
Comstock	Donald	17 Oct 1943		Albert G. Comstock	Bernice Louison	0,8,12
Crotteau	Harold	3 Nov 2007	Justine Elrene Schake	Louis Crotteau	Caroline Hutter	84,7,29
Crotteau	Justine	15 Jun 1990	Harold Joseph Crotteau	Clarence Schake	Margaret Williams	62,9,8
Dahlman	Emil	27 Jan 1956	Elizabeth Lubben	Henry Dahlman	Augusta Bauers	68,10,5
Dallmann	Augusta	13 Nov 1935	Henry Carl Dallman			78,1,27
Dallmann	Henry	15 Dec 1928	Augusta Bauers	Christ Dallmann	Unknown	78,10,4
Dam	Ida	12 Jan 1995	Nels Dam	Bonsak Olaussen Berg	Hilda Sofie Hansen	86,10,16
Dam	Nels	16 Mar 1978	Ida Matilda Berg	Jens P. Dam	Magrete	84,1,7
Dam, Jr.	Nels	28 Feb 1986		Nels Dam	Ida Berg	53,6,15
Deremo	Josephine	14 Jul 1915		Harvey Deremo	Georgia Beighle	1,7,15

Lakeview Cemetery - spouse, parents and age						
Last Name	First	DOD	Spouse	Father	Mother	Age (Y,M,D)
Ellis	Roger	16 Aug 1935		Lawrence Ellis	Dora Moline	0,0,5
Fenton	Bruce	31 Jul 1938		Earl Lyman Fenton	Eva Potter	4,11,5
Fenton	Charles	22 Jun 1961	Mary Alvina Zarbock	Lyman Fenton	Frances Hancock	89,3,30
Fenton	Lyman	10 Dec 1917	Frances Hancock	Albert Fenton	Sarah Cooper	81,10,12
Fenton	Mary	12 Aug 1964	Charles A. Fenton	Gottlieb Zarbock	Ottelia Schmidt	88,5,23
Forgerson	Bertha	17 Sep 1967	George Forgerson	George Pemberton	Anna Mary Johnson	97,3,1
Forgerson	George	28 Dec 1947	Bertha Pemberton	Samuel Forgerson	Jane Harris	82,11,18
Fraley	Lura	4 Feb 1925		Frank Fraley	Viola McDorman	0,9,4
Gilbertson	Cena	3 Dec 1923	Arthur Amandus Gilbertson	Charles Pence	Effie Armantrout	19,7,14
Gilden	Jennie	4 Sep 1952	Reuben C. Gilden	Frank Love	Lizzie Cain	44,11,20
Gillette	Jon	11 Mar 2016	Linda June Pettit	John Henry Gillette	Elma Sofie Isaacson	72,3,11
Gillette	Linda	18 Oct 2015	Jon Henry Gillette	Lawrence R. Pettit	Lilja Secilia Niemi	66,9,13
Gisler	Frank	23 Nov 1975	Lela Jane Cagley	Charles August Gisler	Caroline Werling	72,8,3
Gisler	Lela	12 Aug 1974	Frank Gisler	Frederick Elmore Cagley	Mirian Allena Ingersoll	64,8,18
Goranson	Albert	12 May 1923		George Goranson	Helga Olsen	2,5,1
Goranson	George	5 Jul 1960	Helga Hjartine Olson	Unknown	Unknown	73,9,10
Goranson	Gilbert	8 Sep 1987	Audre Mae Mowers	George Goranson	Helga Olson	67,9,13
Goranson	Helga	18 Apr 1955	George Goranson	Mons Olsen	Hanna Hendrickson	65,9,12
Goranson	Theodore	23 May 1980	Ramona Pelofske	George Goranson	Helga Olsen	55,6,8
Goranson	William	23 May 2004		Aaron Bruce Goranson	Rebecca Maria Chapinski	0
Gowdy	Clara	14 Jun 1919	Willard Scott Gowdy	Lyman Fenton	Frances Hancock	54,5,2
Gowdy	Mary Ann	23 Jan 1925	Willard S. Gowdy	James Harell		62,9,11
Gowdy	Willard	21 Jul 1930	Mary Ann Harell	Nelson E. Gowdy	Mary Peck	69,4,11
Graff	Gilmore	26 Oct 1933		Lewis Peter Graff	Ida Seltenreich	22,10,1
Graff	Ida	5 Sep 1947	Lewis Peter Graff	Julius Sellenreich	Fredericka Fabian	66,4,6

Lakeview Cemetery - spouse, parents and age						
Last Name	First	DOD	Spouse	Father	Mother	Age (Y,M,D)
Graff	Lewis	27 Apr 1947	Ida Seltenreich	Lewis Graff	Amelia Langhoff	70,5,16
Graff	Mae	10 Feb 2008	Walter Graff	Mike Mononen	Alina Larson	85,4,27
Graff	Walter	26 Dec 1986	Mae S. Mononen	Lewis Peter Graff	Ida Seltenreich	77,2,28
Groth	Amy	3 Oct 1963	Charles Groth	Lars Erickson	Ida	61,9,24
Groth	Augusta	31 Dec 1962		Frederich Groth	Augusta Truhn	75,2,18
Groth	Augusta	3 Aug 1929	Frederick Groth	Henry Truhn		68,11,30
Groth	Carl	4 Apr 1983	Amy Erickson	Frederich Groth	Augusta Truhn	85,5,17
Groth	Dorothy	30 Sep 2015	Russell Earl Groth	George Meacham	Jennie Edwards	95,3,10
Groth	Duane	21 Apr 1973	Sally Lou Olesiak	Russell Earl Groth	Dorothy Mae Meacham	25,0,29
Groth	Elcey	19 Apr 1971		Frederich Groth	Augusta Truhn	69,9,19
Groth	Elvira	16 Nov 1975	Ernest William Groth	Frank Johnson		80,9,23
Groth	Ernest	2 Apr 1955	Elvira Johnson	Fred Groth	Augusta Truhn	59,11,5
Groth	Ferdinand	23 May 1912	Marie Hertzog	Franz Groth	Anna Kantz	86,9,14
Groth	Frederick	12 Aug 1916	Augusta Truhn	Ferdinand Groth	Marie Hertzby	65,9,22
Groth	Gerald	30 Nov 1984	Marilyn J. Ronkainen	Ernest William Groth	Elvira Johnson	56,4,28
Groth	Grace	16 Aug 1991	Oscar Groth	Andrew Amundson	Julia Paulson	82,2,2
Groth	Henry	26 Oct 1937	Sophia Wolfram	Fred Groth	Augusta Truhn	56,10,14
Groth	Karleen	4 Jul 1942		Carl Otto Groth	Amy Victoria Erickson	1,3,12
Groth	Marlene	9 May 1998	Neal Groth	Harley Miller	Dorothy E. Saylor	61,11,20
Groth	Neal	7 Mar 1989	Marlene Kay Miller	Ernest William Groth	Elvira Johnson	55,6,27
Groth	Oscar	28 Jan 1969	Grace Amundson	Frederich Groth	Augusta Truhn	61,10,24
Groth	Russell	10 Sep 1992	Dorothy Mae Meacham	Ernest William Groth	Elvira Johnson	74,5,18
Groth	Sophia	22 Nov 1924	Henry Groth	Christian Wolfram	Sophia Schmidt	42,0,5
Groth	Wesley	16 Apr 1922		Ernest William Groth	Elvira Johnson	0,0,4
Groth	William	22 Nov 1938		Carl Otto Groth	Amy Victoria Erickson	3,0,14

Lakeview Cemetery - spouse, parents and age						
Last Name	First	DOD	Spouse	Father	Mother	Age (Y,M,D)
Groth Wolfram	Hilda	14 Jan 2004	Godfrey Wolfram	Louis Larsen	Karin Gurine Pedersen	100,7,5
Guitare	Agnes	10 Mar 1957	John Guitare	Dave Deview	Unknown	76,6,21
Guitare	David	14 Feb 1951		James Donald Guitare	Anna Alma Klavu	0,0,1
Guitare	John	2 Apr 1952	Agnes Almira	Unknown		71,7,1
Gustafson	Edith	7 May 1992	Walter C. Gustafson	Tobias Carlson	Sophia Semel	87,2,16
Gustafson	Eleanor	7 Jan 1936		Walter C. Gustafson	Edith Carlson	12,2,23
Gustafson	Signe	2 Nov 1963	Tobias E. Gustafson	Unknown		80,0,12
Gustafson	Vernon	29 Apr 1961		Walter C. Gustafson	Edith Carlson	33,8,30
Gustafson	Walter	27 Sep 1970	Edith Carlson	Tobias Eurenus Gustafson	Signe Cecilia Peterson	68,8,9
Hamren	Kenneth	19 May 1971	Lorraine Ellen Peterson	Carl Olaf Hamren	Jennie Marie Luuki	42,9,2
Hamren	Lorraine	2 Apr 1987	Kenneth Raymond Hamren	Victor R. Peterson	Loma B. Murray	62,2,8
Harp	Ada	12 Mar 1984	Lyman Louis Harp	Hugh Hughes	Grace Evans	100,4,26
Harp	Hazel	24 Jun 1970	Lloyd Harp	Frank David Hotchkiss	Helen Gertrude Forgerson	54,5,29
Harp	Jacquelyn	14 Jun 1943		Lloyd Evan Harp	Hazel Louise Hotchkiss	8,0,8
Harp	Leone	2 Oct 1934		Lyman Harp	Ada Hughes	4,8,19
Harp	Lloyd	10 Nov 1981	Hazel Louise Hotchkiss	Lyman Harp	Ada Hughes	71,8,28
Harp	Lyman	23 Sep 1955	Ada Grace Hughes	William H. Harp	Nancy Matilda Vandervort	71,7,5
Harp	Marlys	11 Jan 1948		Lloyd Evan Harp	Hazel Louise Hotchkiss	9,11,19
Hart	Clarence	26 Aug 1983	Hazel Freda Graff	Fred Hart	Lena Johnson	87,0,5
Hart	Hazel	23 Sep 1989	Clarence Hart	Lewis Peter Graff	Ida Seltenreich	85,1,24
Hart	Lyle	13 Sep 2007	Nina Nora Zinter	Clarence Hart	Hazel Graff	79,1,8
Hart	Neil	17 Sep 1935		F. Clarence Hart	Hazel Graff	2,4,1
Hart	Nina	5 Feb 2008	Lyle Clarence Hart	Henry Zinter	Louise Hartwig	78,3,24
Hart	Wesley	14 Apr 1978		Lyle Clarence Hart	Nina Nora Zinter	19,8,8
Hotchkiss	Betty	23 Jul 2012	Richard Hotchkiss	Charles Deater	Lillian Culhane	78,4,8

Lakeview Cemetery - spouse, parents and age						
Last Name	First	DOD	Spouse	Father	Mother	Age (Y,M,D)
Hotchkiss	Frank	30 Jul 1966	Helen Gertrude Forgeron	William Hotchkiss	Susan Haigh	78,10,4
Hotchkiss	Frank	1 Jan 1989	Martha Dorothy Goranson	Frank David Hotchkiss	Helen Gertrude Forgeron	74,6,24
Hotchkiss	Helen	20 Sep 1970	Frank David Hotchkiss	George Forgeron	Bertha May Pemberton	77,2,30
Hotchkiss	Martha	30 Aug 1997	Frank William Hotchkiss	George Goranson	Helga Olsen	75,5,27
Hotchkiss	Richard	10 Feb 2008	Betty Deater	Frank David Hotchkiss	Helen Gertrude Forgeron	79,3,28
Hugdahl	Carl	9 Jan 1986	Carol Schake	Ole Hugdahl	Margaret Stone	64,8,10
Hugdahl	Carol	1 Jan 1992	Carl Hugdahl	Clarence Albert Schake	Margaret Belle Mitchell	56,11,20
Jauss	Arthur	13 Aug 2016	Bernice Gilbertson	Carl Jauss	Rose Bopp	98,6,11
Jauss	Bernice	18 Sep 1995	Arthur Jauss	Arthur A. Gilbertson	Cena Amy Pense	76,11,9
Johlfs	Baby	4 May 1933		Arthur Johlfs	Leona Lenz	0,0,2
Johlfs	Ileen	2 Jan 1930		Arthur Johlfs	Leona Lenz	0,0,3
Johnson	Adolf	8 Dec 1937		C.H. Johnson	Ida Jalander	41,6,22
Johnson	Baby Boy	7 Oct 1917		Oscar L. Johnson	Bertha Groth	0
Johnson	Carl	4 Oct 1929	Ida Augusta Rask Thelander	Unknown		70,9,18
Johnson	Della	21 Mar 1985	Gustave Martin Johnson	Charles Pence	Effie Armantrout	85,11,10
Johnson	Edna	14 Feb 1976	Henry W. Johnson	Jacob Hagglund	Emma Johnson	73,4,13
Johnson	Emelia	9 Sep 1967	Walter W. Johnson	Jacob Hagglund	Emma Johnson	69,1,0
Johnson	Gustave	21 Nov 1988	Della Edith Pence	Nels Johnson	Kathrina Paulson	102,0,3
Johnson	Henry	20 Sep 1983	Edna Hagglund	John Adolph Johnson	Maria	73,2,6
Johnson	Ida	8 Sep 1928	Carl H. Johnson	Gustaf Rask	Marta Stina Rask	61,11,5
Johnson	Ida	31 May 1949	John Alfred Johnson	Johann Berg	Sarah	74,2,9
Johnson	John	6 Dec 1934	Ida Christina Berg	Johanes Johnson	Johanna Magnuson	72,11,7
Johnson	John	5 Oct 1964	Maria W.	Unknown		90,11,22
Johnson	Kathrina	4 Mar 1907	Nels Johnson			61
Johnson	Nels	1918		Nels Johnson	Kathrina Paulson	34



Lakeview Cemetery - spouse, parents and age						
Last Name	First	DOD	Spouse	Father	Mother	Age (Y,M,D)
Johnson	Nels	5 Oct 1944	Anna Sterling Mallison	John Swanson	not known	92,2,19
Johnson	Paul	22 May 2005		Henry William Johnson	Edna Hagglund	62,3,13
Johnson	Peter	15 Apr 1960		Unknown		69,9,1
Johnson	Thelma	5 Apr 2015	Walter M. Johnson	Peter Jorgenson	Hannah Meyer	94,0,7
Johnson	Walter	3 Aug 1973	Emelia Heglund	William Johnson	Matilda	74,9,18
Johnson	Walter	14 May 2003	Thelma Jorgenson	Gustave M. Johnson	Della Pence	83,4,27
Jolliffe	Kathryn	9 Dec 2013		Charles Albert Pomplun	Bertha Anna Marie Schaller	72,0,8
Kajander	Anna	15 Jan 1905		John Kajander	Magdalena Bimberg	23,4,24
Kemi	Eugene	19 Aug 2002	Laverne Rosella Pettit	August Kemi	Hilja Kemi	82,4,8
Kemi	Laverne	23 Mar 2001	Eugene Kemi	Cleveland Pettit	Rena Frances Otten	69,3,10
Kirzy	Agnes	20 Dec 1964	Joseph Kirzy	John Zentkowski	Unknown	70,8,18
Kirzy	Joseph	25 Mar 1986	Agnes Zink	Unknown		100,6,10
Kirzy	Raymond	24 Jul 2004	Juanita	Joseph Kirzy	Agnes Zenkowski	84,8,11
Kisler	George	1 Jan 2011	Nancy Marie Albright	Lowell Kisler	Jenny Hazel Forgerson	74,1,28
Kisler	Jennie	8 Oct 1964	Lowell Kisler	George Forgerson	Bertha May Pemberton	68,1,10
Kisler	Lowell	19 Oct 1980	Jennie Hazel Forgerson	Charles Kisler	Emma Maxwell	82,5,25
Kisler	Nancy	27 Jun 1996	George Lawrence Kisler	Manuel Albert Albright	Linnea Anna Anderson	55,1,7
Kumm	Glenn	14 Mar 2009	Edith Kirzy	Jesse Kumm	Margaret Cheeseman	87,4,9
Kumm	Jesse	20 May 1967	Margaret Cheeseman	Herman Kumm	Lydia Fischer	78,8,29
Kumm	Larry	15 Sep 2005	Charlotte Marie Tabako	Glenn Jesse Kumm	Edith Kirzy	51,10,1
Kumm	Margaret	22 Oct 1976	Jesse Frank Kumm	Joel S. Cheeseman	Cecilia A. Humphrey	82,6,23
Ladeen	Sammy	12 Jun 1937		Fred Ladeen	Maud Gustafson	14,3,6
Larson	Kate	6 Nov 1919	C. D. Larson	Wallace Urban	Mary Nichols	46,10,5
LeBlue	Calma	21 Nov 1962	Anthony Robert LeBlue	Andrew Amundson	Julia Paulson	64,2,3
Long	Henry	12 Mar 1957		Julius Long	Amelia Boesler	86,3,12

Lakeview Cemetery - spouse, parents and age						
Last Name	First	DOD	Spouse	Father	Mother	Age (Y,M,D)
Long	Richard	24 Oct 1945		Julius Long	Amelia Boesler	58,10,8
Louison	Clara	31 Aug 1950	James Louison	Henry Dallman	Augusta Bauers	67,10,30
Louison	Clarence	18 Apr 1940		James Louison	Clara Dallman	31,1,0
Louison	Norman	1 Mar 2005	Mathilda Solomon	James Louison	Clara Dallman	91,1,1
Lowe	Florence	25 Nov 1918		George W. Lowe	Olga Maria Berg	9,9,21
Lowe	George	8 May 1930	Olga Maria Berg	David Lowe	Hannah	61,0,6
Lowe	Olga	24 Nov 1918		George W. Lowe	Olga Maria Berg	6,7,17
Lowe	Walter	24 Nov 1918		George W. Lowe	Olga Maria Berg	2,4,4
Lowe Wendt	Olga	23 Jul 1975	George Washington Lowe	Bonsak Olaussen Berg	Hilda Sofie Hansen	92,10,27
Lowry	Eunice	24 Jul 2005	William Lowry	Albert Newstrom	Marie Janeson	96,9,13
Lowry	Martha	2 Mar 1977	Thomas Lowry			95,9,1
Lowry	Thomas	3 Aug 1949	Martha			74,9,5
Lowry	William	16 Mar 1967	Eunice Eleanor Newstrom	Thomas Lowry	Emma Peterson	64,5,16
Lubben	Thomas	2 Apr 1947	Della Schlive	Thomas Lubben	Unknown	76,2,20
Lubben Schlive	Della	7 Sep 1965	William Schlive	Unknown		84,11,23
Madden	Thomas	29 Jun 1943	Rose Graff	Francis P. Madden	Luella Inman	46,10,6
Malmsten	Kristina	23 May 1932		Fredrich Malmsten	Ingeborg Hilsdotter	74,4,22
Maruski	Andrew	24 Dec 1996	Frances Hedin	Andrew Maruski	Marion Kasakevich	91,5,4
Maruski	Frances	26 Feb 1944	Andrew Maruski	John Hedin	Christine Erikson	34,1,5
Maruski	George	29 Dec 1992	Mae Isabelle McLain	Andrew Maruski	Marion Kasakevich	79,2,8
Maruski	Mae	11 Jun 2010	George Maruski	Walter McLain	Alma Johnson	92,1,10
McLain	Gertrude	11 Feb 1975	Walter Stewart McLain	John Edstrom	Rita	72,0,15
McLain	Randy	17 Apr 2003		Richard Wayne McLain	Barbara Helen Harp	47,9,0
McLain	Walter	25 Oct 1971	Gertrude Edstrom	Walter McLain	Mary McDonald	76,3,22
McMillan	Edward	3 Oct 1946	Margaret	John McMillan	Samantha Isett	74,1,24

Lakeview Cemetery - spouse, parents and age						
Last Name	First	DOD	Spouse	Father	Mother	Age (Y,M,D)
McMillan	Esther	25 Dec 1937		Harold W. McMillan	Flora Mae Ricketts	0,1,24
McMillan	Flora	23 Jun 1977	Harold McMillan	Joseph Ricketts	Nellie Hand	69,5,20
McMillan	Harold	12 May 1990	Flora Mae Ricketts	Edward McMillan	Margaret Thompson	90,1,27
McMillan	Margaret	15 Sep 1960	Edward McMillan	Cyrus V. Thompson	Lucinda Yingling	79,1,12
McMillan	Patricia	28 Mar 2007	Steven Edward McMillan	Elmer Albrecht	Grace Whitney	66,3,2
McMillan	Steve	10 Oct 1995	Patricia A. Albrecht	Harold W. McMillan	Flora Mae Ricketts	56,0,21
Minor	Nellie	27 Jul 1954	Frank Minor	Willis Hand	Elizabeth Lunsford	69,1,21
Moen	Fred	20 Feb 1958	Marie Versto	Esten Moen	Gunhild Gylland	76,6,29
Moen	Marie	26 Feb 1975	Fred Moen	S. J. Versto	Karen	93,3,9
Morrison	Peter	23 Sep 1914	Mary Ann Clarkson	Jake Morrison	Not Known	64,6,7
Navakas	Josephine	3 Jul 1935		Joseph Navakas	Adella Peragis	25,4,20
Neubauer	Christine	21 Sep 1953	Jesse Franklin Neubauer	Gulbrand Lyseng	Marit	74,7,8
Newstrom	Albert	23 Dec 1965	Marie Janson	Emanuel Johnson		89,11,21
Newstrom	Marie	31 Oct 1965	Albert Newstrom	Chris Janson	Valborg Christensen	82,5,25
Nickoloff	Martin	2 Oct 1955		Unknown		61,3,27
Niesen	Lawrence	24 Sep 1974	Margaret Otten	Peter Niesen	Alma Mary Folwick	59,4,29
Niesen	Margaret	22 Mar 2011	Lawrence Niesen	John Otten	Anna Pettit	90,3,10
Niesen	Robert	25 Nov 1941		Lawrence Frank Niesen	Margaret Otten	0,0,14
Nordquist	Annie	5 Nov 1956	August Nordquist	Jonas Nelson	Martha Rudy	84,7,2
Nordquist	August	29 Mar 1946	Annie Nelson	Unknown		82,0,21
Nordquist	John	3 Jun 1965	Martha Jensen	August Nordquist	Anna Nelson	66,1,29
Nordquist	Lawrence	5 Apr 1950		August Nordquist	Anne Nelson	39,6,16
Nordquist	Martha	7 Mar 1989	John Hugo Nordquist	Alfred Jensen	Annie	93,1,26
Norton	Edwin	4 Apr 1972	Mary Schliauter	John Peter Norton	Marie H. Olson	67,1,12
Norton	John	14 Dec 1912	Marie Olsen	Lars Magnuson		50,4,5

Lakeview Cemetery - spouse, parents and age						
Last Name	First	DOD	Spouse	Father	Mother	Age (Y,M,D)
Norton	Josephine	23 Oct 1911		John Peter Norton	Marie H. Olson	0,0,8
Norton	Lester	1 Apr 1974	Ida Lorraine Jacobson	John Peter Norton	Marie H. Olson	67,0,4
Norton	Marie	8 Sep 1972	John Norton	Mons Olsen	Hanna Hendrickson	87,4,18
Norton	Mary	21 Aug 2002	Edwin John Norton	Alex Schliauter	Agatha Stipalus	89,5,2
Norton	Wilfred	21 Sep 1974	Myron A. Pauley	John Peter Norton	Marie H. Olson	64,5,3
Nosteby	Ella	13 Aug 1972	Gullik Nosteby	Frens Jacobson	Bertha Schultz	78,8,10
Nosteby	Gullik	30 Sep 1966	Ella Jacobson	Gullik Larson	Gro Hanstetter	89,8,0
Oja	Henry	15 Oct 2008	Maxine Ruth Lindgren	Albert Oja	Amanda Luuki	82,9,10
Oja	Maxine	5 Jun 2000	Henry Leonard Oja	Harry Lindgren	Lillian Pomplun	71,7,3
Olsen	Hanne	3 Sep 1929	Mons Olsen	Hans Hendrickson	Unknown	77,11,26
Olsen	Mons	4 Apr 1935	Hannah Dorthea Hendrickson	Ole Olsen		76,9,12
Olsen	Ruby	16 Apr 2007	Oakley Olsen	Roy Dopp	Ida M. Hall	88,11,21
Olson	Ben	8 Jan 1916		Oscar Olson	Elsie Hanson	0,0,25
Ostlund	Lars	21 Dec 1914		Jons Ostlund	Anna Elofsdotter	68,6,21
Otten	Anna	29 Jan 1963	John Otten	Richard Pettit	Lulu Glascoe	61,5,7
Otten	Beecke	14 Aug 1920	Jorgan Otten	Meinert Jurgens Otten	Antje Janssen Wilhelms	62,11,26
Otten	Calvin	11 Nov 1934		John Otten	Anna Pettit	0,0,7
Otten	Etta	5 Nov 1974	Henry Otten	Henry Otten	Etta Denika	74,4,15
Otten	Frances	11 Nov 1917		Henry Otten	Etta Otten	0,6,0
Otten	George	31 Dec 1996		Henry Otten	Etta Otten	74,7,5
Otten	Henry	6 Dec 1966	Etta Otten	Jorgan Otten	Beecke Otten	75,9,15
Otten	John	25 Dec 1972	Anna Pettit	George Otten	Becky	77,10,23
Otten	John	23 Feb 1927		John Otten	Anna Pettit	0,3,5
Otten	Jorgan	7 Oct 1939	Beecke	Albert Otten	Jantjen Hinrichs Tess	85,11,2
Otten	Lucille	25 Sep 1917		John Otten	Anna Pettit	0,1,24

Lakeview Cemetery - spouse, parents and age						
Last Name	First	DOD	Spouse	Father	Mother	Age (Y,M,D)
Otten	Myra	5 Dec 1934		John Otten	Anna Pettit	10,9,7
Otten	William	1940-1950		Jorgan Otten	Beecke Otten	
Paukert	Dorothy	11 Aug 1991	Evert Anderson	Jesse Kumm	Margaret Cheeseman	72,10,7
Pence	Charles	5 Jul 1942	Effie Armantrout	David Pence	Catharine Zeigler	78,0,21
Pence	Effie	15 Jun 1963	Charles Franklin Pence	John Armantrout	Ruth Ann	93,8,0
Peterson	Anna	17 Dec 1937	John L. Peterson	Fredrich Malmsten	Ingeborg Hilsdotter	77,2,8
Peterson	Carl	27 Apr 1983		John Peterson	Anna Malmsten	83,3,24
Peterson	Ellen	22 Mar 1988		John Peterson	Anna Malmsten	89,10,25
Peterson	Emil	7 Jan 1980	Klarice Moen	Carl Peterson	Caroline Petersdotter	72,0,3
Peterson	John	28 Jun 1951	Anna Malmsten	Unknown		86,4,3
Peterson	Klarice	24 Oct 1963	Emil Peterson	Fred Moen	Marie Versto	50,4,27
Peterson	Robert	6 Jan 1933		Solomon Peterson	Unknown	59,8,7
Pettit	Alfred	11 Feb 1984	Helvie Dorothy Nieminen	Cleveland Pettit	Rena Frances Otten	65,7,23
Pettit	Arthur	25 May 1994	Ruth Schake	Cleveland Pettit	Rena Frances Otten	80,10,6
Pettit	Baby	31 Jul 1934		Orville M. Pettit	Rina Otten	0
Pettit	Cleveland	7 Feb 1950	Rena Francis Otten	Samuel Richard Pettit	Lulu Glascoe	63,2,8
Pettit	Darrell	7 Nov 1974		Lawrence R. Pettit	Lilja Secelia Niemi	19,10,3
Pettit	Helvie	20 Jul 2005	Alfred Pettit	Emil Samuel Nieminen	Tyayne Willamo	78,8,19
Pettit	Lawrence	28 May 1993	Lilja Niemi	Cleveland Pettit	Rena Frances Otten	77,5,24
Pettit	Lilja	24 Oct 2004	Lawrence Pettit	Nicodemus Niemi	Aliina Sofia Lehtinen	86,1,23
Pettit	Rena	19 Aug 1942	Cleveland Pettit	Jorgan Otten	Beecke	49,4,17
Pettit	Ruth	22 Aug 2005	Arthur Henry Pettit	Clarence Albert Schake	Margaret Belle Mitchell	86,9,11
Pettit	Terry	21 Aug 1950		Emery Pettit	Emma Wallin	2,4,2
Pino	Fred	25 Aug 1992	Hazel Thompson	Fred Pino	Amelia Sonnenburg	90,2,14
Pino	Hazel	22 Apr 1999	Fred Pino	John Thompson	Anna	92,11,5

Lakeview Cemetery - spouse, parents and age						
Last Name	First	DOD	Spouse	Father	Mother	Age (Y,M,D)
Pless	Michael	22 Jan 1950		Unknown		69,4,25
Pomplun	Barbara	12 Apr 1956		Charles Albert Pomplun	Bertha Anna Marie Schaller	16,10,4
Pomplun	Bertha	21 May 1982	Charles Pomplun	Henry Schaller	Fredricka Gebhardt	71,5,27
Pomplun	Charles	28 Jan 1972	Bertha Ann Schaller	Charles Pomplun	Martha Grosskreutz	64,2,7
Pomplun	Karen	24 Aug 1946		Charles Albert Pomplun	Bertha Anna Marie Schaller	4,8,23
Pracht	Ferdinand	11 Feb 1936	Matthilda Bondimere	August Pracht	Anna Hansman	85,9,23
Pracht	Henry	7 Sep 1967	Maria Pfundheller	Ferdinand Pracht	Matthilda Bondimere	78,2,27
Pracht	Maria	21 Mar 1951	Henry Theodore Pracht	Otto Pfundheller	Emma Metzger	56,0,7
Pracht	Matthilda	16 May 1927	Ferdinand Pracht	John Bondimere	Caroline Loerke	61,5,24
Pracht	Viola	22 Dec 2000		Henry Pracht	Mary Pfundheller	84,4,4
Rack	Ernest	2 Feb 1953		John Rack	Margaret Leidner	72,0,19
Radtke	Eva	26 Jan 2017	Oliver Winston Radtke	John Hugo Nordquist	Martha Jensen	89,5,14
Reed	Arthur	1 May 1919		Elvin Reed	Agnes DeVica	17,0,14
Reutter	Venita	6 Jul 1926		Frederick Reutter	Loretta Mae Ellis	15,11,8
Reynolds	Laurence	4 Nov 1937		William Reynolds	Emma Pemberton	32,7,28
Ricker	Anna	13 Dec 1943	Robert Ricker	August Anderson	Unknown	96,7,14
Sanvig	Corrine	10 Jul 1971	Selmar Sanvig	Hilding Larson	Margaret Carlson	38,3,29
Sanvig	Selmar	13 May 1993	Corrine Larson	Ole Sanvig	Sena Timberg	66,6,1
Sarvela	Franklin	4 Oct 1969	Karen Alyce Maruski	Victor S. Sarvela	Hilda S. Winquist	33,10,14
Sarvela	Karen	26 Jan 2012	Franklin Victor Sarvela	George Maruski	Mae McLain	72,11,11
Schake	Arvilla	25 Jan 1938		Clarence Albert Schake	Margaret Belle Williams	0,5,19
Schake	Clarence	19 Aug 1991	Margaret Belle Williams	Edward Schake	Nellie Pines	93,3,12
Schake	Margaret	10 Feb 1965	Clarence Albert Schake			64,3,24
Schake	Walter	14 Jun 1945		Clarence Albert Schake	Margaret Belle Williams	0
Schliep	Louise	23 Mar 1925	Albert F. Schliep	Charles Grassman	Wilhelmina Genske	54,11,21

Lakeview Cemetery - spouse, parents and age						
Last Name	First	DOD	Spouse	Father	Mother	Age (Y,M,D)
Schlive	William	24 Aug 1960	Della Lubben	Unknown		79,9,27
Schmidt	Andres	23 Feb 1977	Elva Engel	Gust Schmidt	Unknown	89,3,25
Schmidt	Elva	16 Aug 2002	Andres Schmidt	Charley Engel	Louise Bornfleth	94,8,20
Schmidt	John	23 Feb 1910		Otto F. Schmidt	Rosina Heinlein	0,1,19
Sears	Raymond	17 Mar 1920		Ray Sears	Lauretta May Ellis	0,0,6
Sjogren	Anna	2 Jan 1978	Paul Sjogren	Unknown		95,5,6
Sjogren	Joan	7 Jul 2006	Nels Peter Sjogren	Michael Sjogren	Ann	99,4,3
Sjogren	Nancy	25 Sep 1943		Nels Sjogren	Joan Schnier	12,4, 5
Sjogren	Nels	15 Apr 1966	Joan Schnier	Paul Sjogren	Anna Lundgren	55,6,21
Sjogren	Oscar	30 Jan 1978		Paul Sjogren	Anna Lundgren	61,4,5
Sjogren	Paul	24 Apr 1945	Anna Lundgren	Pere Sjogren	Unknown	87,11,25
Sjogren	Paul	20 Feb 1980		Paul Sjogren	Anna Lundgren	66,6,17
Sjogren	Pauline	26 Jan 1997		Paul Sjogren	Anna Lundgren	87,2,24
Skarland	George	8 Jun 1973	Minnie Adeline Groth	Unknown	Unknown	80,9,22
Skarland	Minnie	4 Oct 1959	George Skarland	Frederich Groth	Augusta Truhn	70,8,14
Sorenson	Arden	21 Mar 2002	Lois Lind	Arnold Sorenson	Ruby Ella Dopp	51,10,9
Sorenson	Merlyn	15 Dec 1967	Jacquelyn	Arnold Sorenson	Ruby Ella Dopp	24,5,5
Sorenson	Ronald	11 Mar 1991		Arnold Sorenson	Ruby Ella Dopp	54,9,17
Spicer	Clara	10 Jun 1942	David Spicer	John Salsbury	Patrice Sherman	85,10,8
Spicer	David	15 Apr 1925	Clara Eva Salsbury	James Spicer	Eliza Ball	77,0,8
Spicer	Jennie	23 May 1958		David Spicer	Clara Salsbury	81,5,21
Stenson	Carl	27 Nov 1960	Julia Anderson	Unknown		85,2,28
Stenson	Edith	1 Apr 2012	Vernon Carl Stenson	John Robert Gelling	Edith Sturno	90,7,25
Stenson	John	27 Sep 1970	Carol Mowers	Carl Oscar Stenson	Julia Mathilda Anderson	46,10,1
Stenson	Julia	6 May 1966	Carl Oscar Stenson	Charles Anderson	Anna Stenberg	76,0,16

Lakeview Cemetery - spouse, parents and age						
Last Name	First	DOD	Spouse	Father	Mother	Age (Y,M,D)
Stenson	Leroy	4 Feb 1918		Carl Oscar Stenson	Julia Mathilda Anderson	0,10,21
Stenson	Lorraine	15 Nov 1989	Walter Oscar Stenson	Walter Johnson	Emelia Heglund	64,11,6
Stenson	Vernon	13 Jul 1974	Edith Gelling	Carl Oscar Stenson	Julia Mathilda Anderson	60,10,3
Stenson	Walter	5 May 1998	Lorraine Elsie Johnson	Carl Oscar Stenson	Julia Mathilda Anderson	77,0,21
Stenson Champion	Carol	19 May 2009	Dick Champion	Earnest William Mowers	Alice M. Abernethy	78,9,19
Tarr	Ora	19 May 1939	Jay Tarr	Charles Frank Liddick	Viola Skinner	38,1,23
Toole	Ruth	25 Jun 1973		Paul Sjogren	Anna Lundgren	67,2,23
Versto	Sverming	2 Apr 1923	Karen Solberg	Jens Evindsen Lid	Gunhild Svenningsdatter	63,9,4
Versto	Victor	18 Dec 1925		Sven Versto	Karen Eidebot?	23,5,21
Wahl	Herman	17 Jun 1952	None	Unknown		71,3,8
Waller	Ida	19 Apr 1917		Jacob Waller	Sophia Johnson	0,11,5
Whitten	Harold	4 May 1948	May Elizabeth Forgeron	Dennis Whitten	Mary Norton	63,9,19
Whitten	May	3 Jul 1961	Harold Whitten	George Forgeron	Bertha May Pemberton	70,0,13
Wickstrand	John	1 Nov 1971			Anna	92,7,24
Witz	Vergene	5 Jul 2012	Carl Witz	Henry Otten	Etta Denika	84,9,24
Zirbel	Clarence	7 Nov 1960		Carroll Zirbel	Pearl Kumm	9,11,22